



The SRS is a "full flow" separator for removal of undissolved sediment in cooling tower systems, processes and hot and chilled water hydronic applications.

- Reduces system maintenance and down-time
- Removes sediment and entrained air
- Improves overall system efficiency and user comfort
- "Full Flow" tangential design optimizes sediment removal over side stream configurations
- High flow capacities offer flexibility in piping and enhances removal of sediment
- Constructed in accordance with ASME Codes on all models

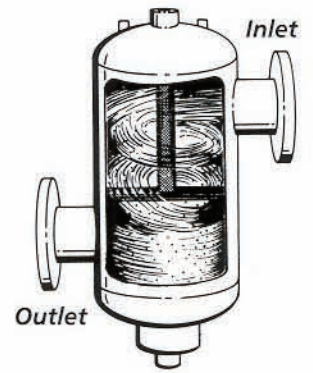
Sediment Removal Separator

- INCREASES SYSTEM EFFICIENCY
- PROTECTS PUMPS SEALS
- EXTENDS LIFE OF SYSTEM COMPONENTS
- REDUCES SYSTEM ENERGY USAGE

Sediment Removal Separator

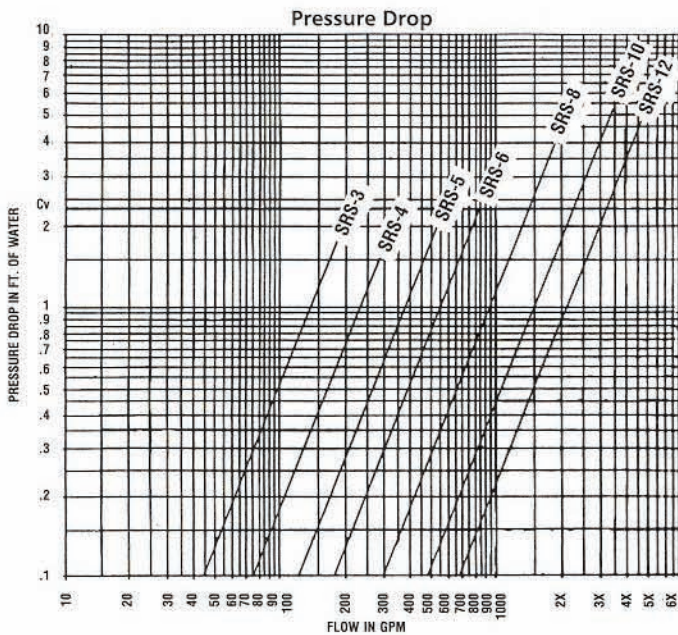
Sediment Removal Separator Specifications

MODEL SRS	3 or 3G	4 or 4G	5 or 5G	6 or 6G	8 or 8G	10 or 10G	12 or 12G
Sizes	3"	4"	5"	6"	8"	10"	12"
Part No.* Flanged	5366-03C-12-001	5366-04F-12-001	5366-05F-12-001	5366-06F-12-001	5366-08F-12-001	5366-10F-12-001	5366-12F-12-001
Part No.* Grooved (G)	5366-03G-12-001	5366-04G-12-001	5366-05G-12-001	5366-06G-12-001	5366-08G-12-001	5366-10G-12-001	5366-12G-12-001
Max. Flow	190	300	530	850	1900	3600	4800

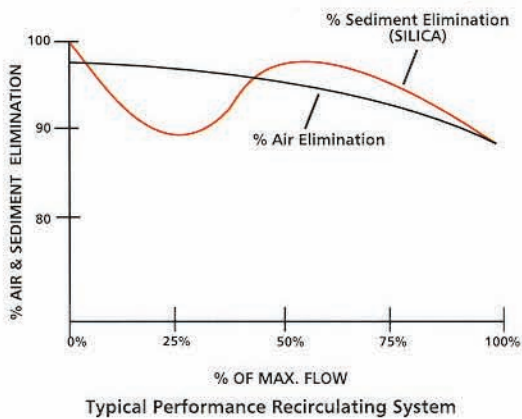


*NPT connection available for 3" SRS, Part No. 5366-03N-12-001
 Maximum Design Pressure: 125 PSIG; Maximum Design Temperature: 350°F
 Higher pressure and temperature ratings are available upon request.

Performance

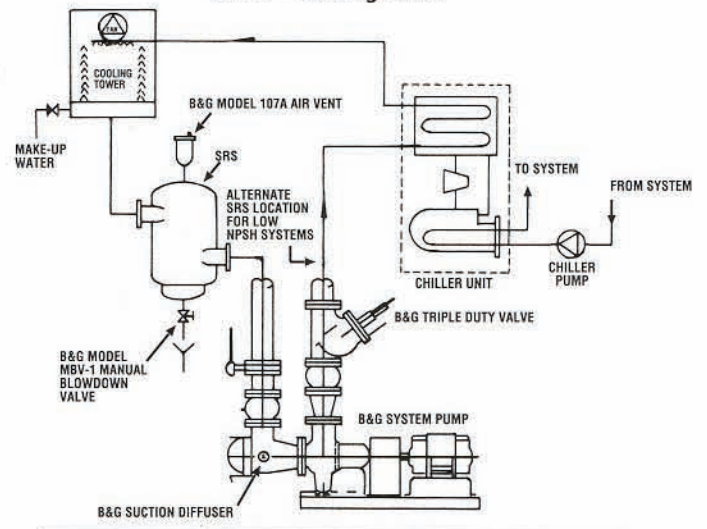


Air & Sediment Elimination Efficiency

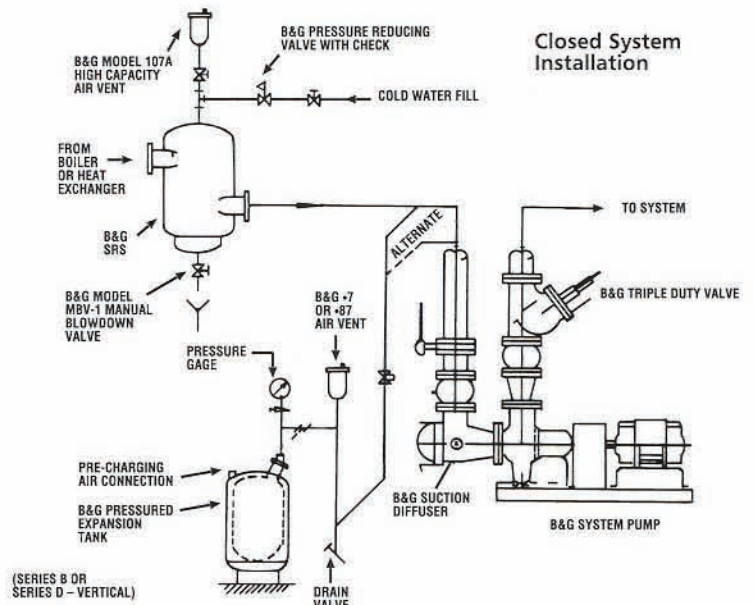


Sample Application

Chiller – Cooling Tower



Closed System Installation



Xylem Inc.
 8200 N. Austin Avenue
 Morton Grove, Illinois 60053
 Phone: (847) 966-3700
 Fax: (847) 965-8379
www.xylem.com/brands/bellgossett

Bell & Gossett is a trademark of Xylem Inc. or one of its subsidiaries.
 © 2012 Xylem Inc. A-514C July 1999