

SINGLE WALL FUEL TANK

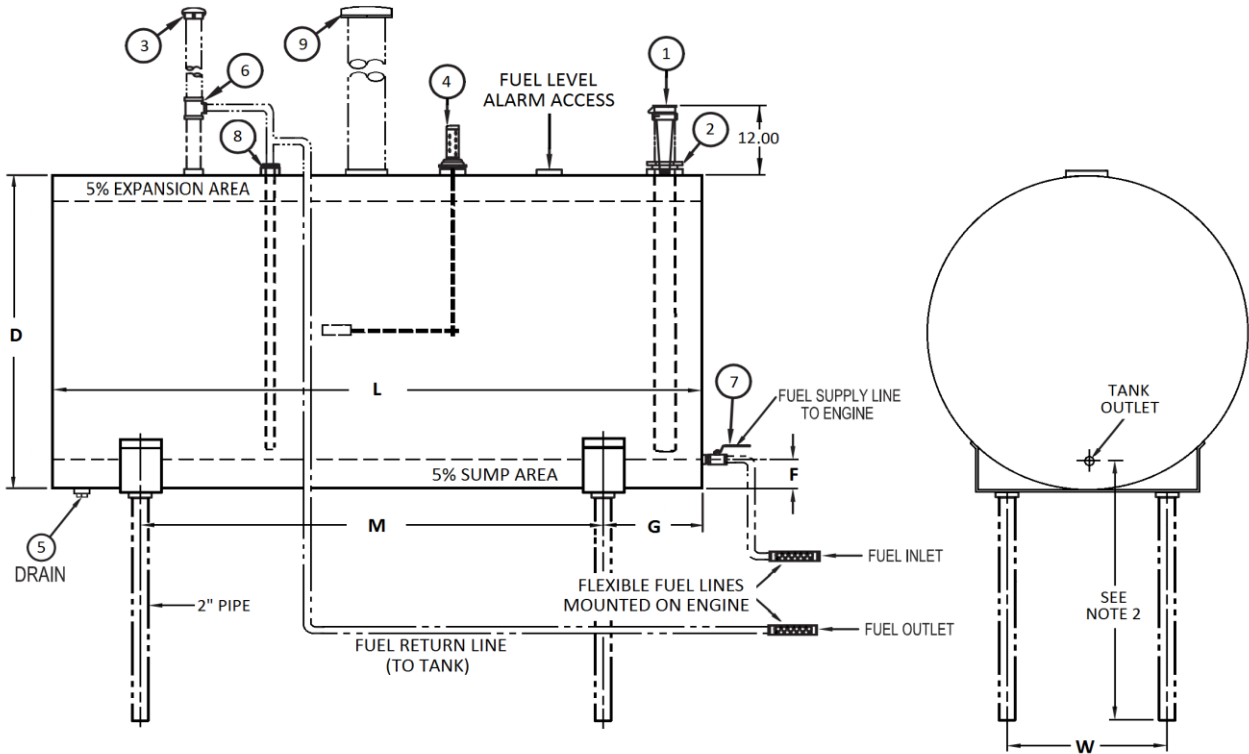
TYPE: ABOVE GROUND HORIZONTAL
 APPROVALS: UL 142
 MATERIAL: MILD CARBON STEEL
 TEST PRESSURE: 3-5 PSI
 PAINT: EXTERIOR ONLY TNEMEC N69 CRAWFORD RED

NOTES

- ITEMS DISPLAYED IN PHANTOM LINES FURNISHED BY OTHERS TO CONFORM TO INDIVIDUAL JOB REQUIREMENTS.
- LOCATE TANK OUTLET LEVEL OR ABOVE THE ENGINE FUEL PUMP CENTERLINE.
- INSTALL TANK IN ACCORDANCE WITH REQUIREMENTS OF LOCAL CODES AND STADNARS. ARRANGE TANK AS CLOSE TO ENGINE AS POSSIBLE.
- PITCH TANK TOWARDS DRAIN .25" PER FOOT.
- FOR PROPER FUEL SUPPLY AND RETURN SIZE SEE ENGINE MANUFACTURER'S RECOMENDATIONS.
- PER LATEST EDITION OF NFPA 20 ALL TANK VENTS SHALL TERMINATE 5' FROM ANY BUILDING OPENING AND 12' FROM GROUND LEVEL.

TANK SIZE (GALLONS)	D	F	G	L	M	W	WEIGHT LB.
61	20.00	1.88	9.00	45.00	27.00	12.00	150
70	24.00	2.50	6.00	36.00	24.00	16.88	155
119	24.00	2.38	8.50	61.00	44.00	14.00	265
140	24.00	2.75	15.00	72.00	42.00	17.50	275
187	30.00	3.00	8.50	61.00	44.00	16.00	330
200	32.00	3.25	15.00	60.00	44.00	22.63	350
231	34.00	3.38	7.50	59.00	44.00	23.00	370
250	32.00	3.25	15.00	72.00	42.00	22.63	390
300	38.00	3.75	8.50	61.00	44.00	23.00	400
359	38.00	3.75	14.50	73.00	44.00	23.00	460
460	48.00	4.75	15.00	60.00	44.00	34.00	550
572	48.00	4.75	14.50	73.00	44.00	30.00	590
650	52.00	5.25	17.75	71.00	44.00	30.00	640
704	60.00	5.88	7.00	58.00	44.00	30.00	750
849	64.00	6.25	8.50	61.00	44.00	30.00	1000
978	64.00	6.25	13.00	70.00	44.00	30.00	1250

ITEM	QTY	DESCRIPTION
1	1	FILL CAP WITH PROVISIONS FOR PADLOCK COMBINED WITH REMOVABLE STRAINER MAX .06 MESH, 2" NPT
2	1	DOUBLE TAP BUSHING, 3" x 2" NPT
3	1	VENT CAP W/ INSECT SCREEN, 2" NPT
4	1	DIRECT READING TANK GAUGE, 2" NPT
5	1	PIPE PLUG, 1" NPT
6	1	PIPE TEE, 2" x 2" x .5" NPT
7	1	BALL VALVE, .75" NPT WITH PROVISION FOR PADLOCK
8	1	DOUBLE TAP BUSHING, 1.5" x .5" NPT
9	1	EMERGENCY RELIEF VENT, 4" NPT



NOT FOR CONSTRUCTION, INSTALLATION OR APPLICATION PURPOSES UNLESS CERTIFIED	
CERTIFIED FOR:	
CUSTOMER ORDER NO.:	TAG NO.
SHOP ORDER:	CERTIFIED BY: DATE: