

DOUBLE WALL FUEL TANK

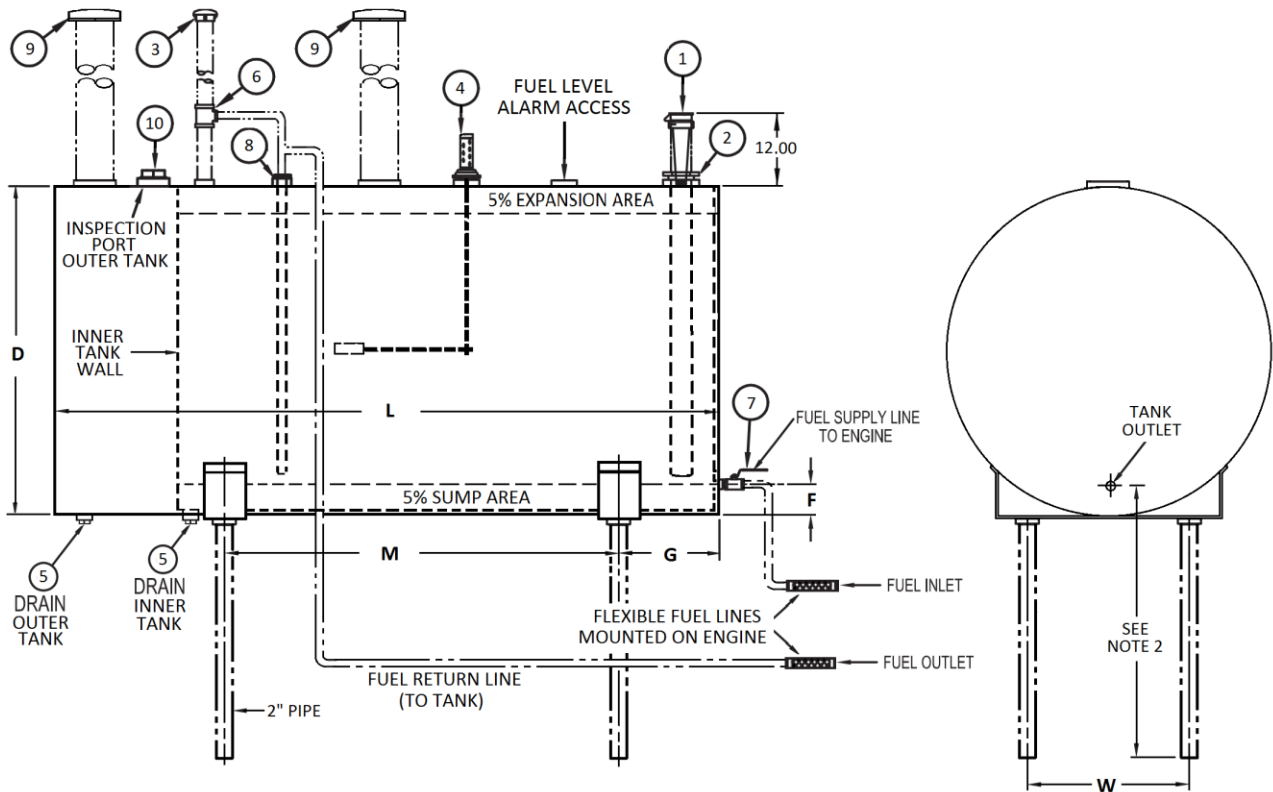
TYPE: ABOVE GROUND HORIZONTAL
APPROVALS: UL 142
MATERIAL: MILD CARBON STEEL
TEST PRESSURE: 3-5 PSI
PAINT: EXTERIOR ONLY TNEMEC N69 CRAWFORD RED

NOTES

- ITEMS DISPLAYED IN PHANTOM LINES FURNISHED BY OTHERS TO CONFORM TO INDIVIDUAL JOB REQUIREMENTS.
- LOCATE TANK OUTLET LEVEL OR ABOVE THE ENGINE FUEL PUMP CENTERLINE.
- INSTALL TANK IN ACCORDANCE WITH REQUIREMENTS OF LOCAL CODES AND STADNARS. ARRANGE TANK AS CLOSE TO ENGINE AS POSSIBLE.
- PITCH TANK TOWARDS DRAIN .25" PER FOOT.
- FOR PROPER FUEL SUPPLY AND RETURN SIZE SEE ENGINE MANUFACTURER'S RECOMENDATIONS.
- PER LATEST EDITION OF NFPA 20 ALL TANK VENTS SHALL TERMINATE 5' FROM ANY BUILDING OPENING AND 12' FROM GROUND LEVEL.

TANK SIZE (GALLONS)	D	F	G	L	M	W	WEIGHT LB.
61	20.00	3.00	9.00	56.00	27.00	12.00	200
70	24.00	3.62	6.00	47.00	24.00	16.88	205
119	24.00	3.50	8.50	72.00	44.00	14.00	300
140	24.00	3.88	15.00	73.00	42.00	17.50	350
187	30.00	4.12	8.50	72.00	44.00	16.00	400
200	32.00	4.50	15.00	71.00	44.00	22.63	410
231	34.00	3.88	7.50	70.00	44.00	23.00	550
250	32.00	4.38	15.00	83.00	42.00	22.63	575
300	38.00	3.75	8.50	61.00	44.00	23.00	750
359	38.00	3.75	14.50	73.00	44.00	23.00	825
460	48.00	4.75	15.00	60.00	44.00	34.00	965
572	48.00	4.75	14.50	73.00	44.00	30.00	1000
650	52.00	5.25	17.75	71.00	44.00	30.00	1150
704	60.00	5.88	7.00	58.00	44.00	30.00	1300
849	64.00	6.25	8.50	61.00	44.00	30.00	1700
978	64.00	6.25	13.00	70.00	44.00	30.00	1800

ITEM	QTY	DESCRIPTION
1	1	FILL CAP WITH PROVISIONS FOR PADLOCK COMBINED WITH REMOVABLE STRAINER MAX .06 MESH, 2" NPT
2	1	DOUBLE TAP BUSHING, 3" x 2" NPT
3	1	VENT CAP W/ INSECT SCREEN, 2" NPT
4	1	DIRECT READING TANK GAUGE, 2" NPT
5	2	PIPE PLUG, 1" NPT
6	1	PIPE TEE, 2" x 2" x .5" NPT
7	1	BALL VALVE, .75" NPT WITH PROVISION FOR PADLOCK
8	1	DOUBLE TAP BUSHING, 1.5" x .5" NPT
9	2	EMERGENCY RELIEF VENT, 4" NPT
10	1	PIPE PLUG, 2" NPT



NOT FOR CONSTRUCTION, INSTALLATION OR APPLICATION PURPOSES UNLESS CERTIFIED

CERTIFIED FOR:

CUSTOMER ORDER NO.:

TAG NO.

SHOP ORDER:

CERTIFIED BY:

DATE: