

**PARTS LIST**  
CP-20e80-100-PL



**Series e-82**  
Replacement Parts





## Index

Nameplate Data.....	3
Exploded View – Standard Seal Configuration.....	4
Exploded View – Stuffing Box Configuration.....	5

### Standard Configuration (-F)

2.5x7, 3x7, 4x7, 6x7.....	6
2.5x9.5, 3x9.5, 4x9.5, 6x9.5,.....	7
3x11, 4x11, 6x11.....	8

### Stuffing Box Configuration (-S)

2.5x7, 3x7, 4x7, 6x7.....	9
2.5x9.5, 3x9.5, 4x9.5, 6x9.5,.....	10
3x11, 4x11, 6x11.....	11



**DATA SHOWN ABOVE ARE FOR REPRESENTATION ONLY**

The pump nameplate identifies the pump by pipe size, pump construction and impeller diameter as shown above. In this example, the nameplate shows a Series e-82, size 3x3x7 in stainless steel fitted (SSF) construction. The impeller diameter is 7" and the motor is 5 HP, 1750 RPM operating speed. The serial number specifically identifies the pump for future reference.

DO NOT REMOVE THE NAMEPLATE. It is important when ordering replacement parts to furnish complete nameplate data.

The Series e-82 pump is furnished in either a "Standard Seal" or "Stuffing Box" construction. The "Standard Seal" pump has no seal designation after the size.

The "Stuffing Box" model has two positive seal configurations:

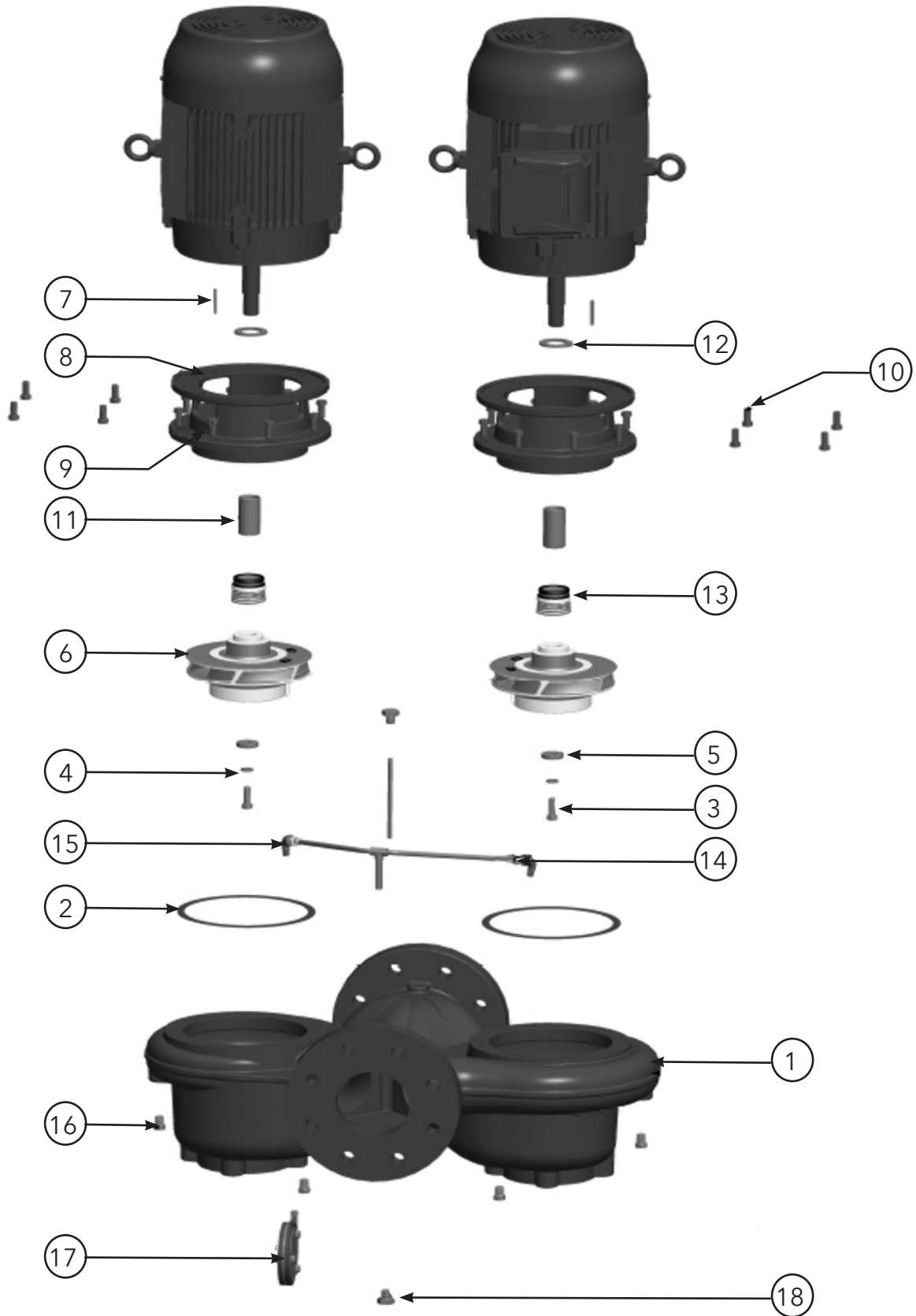
**e-82-S Single Seal**

**e-82-PF Packing Rings with Flush (Lantern) Ring**

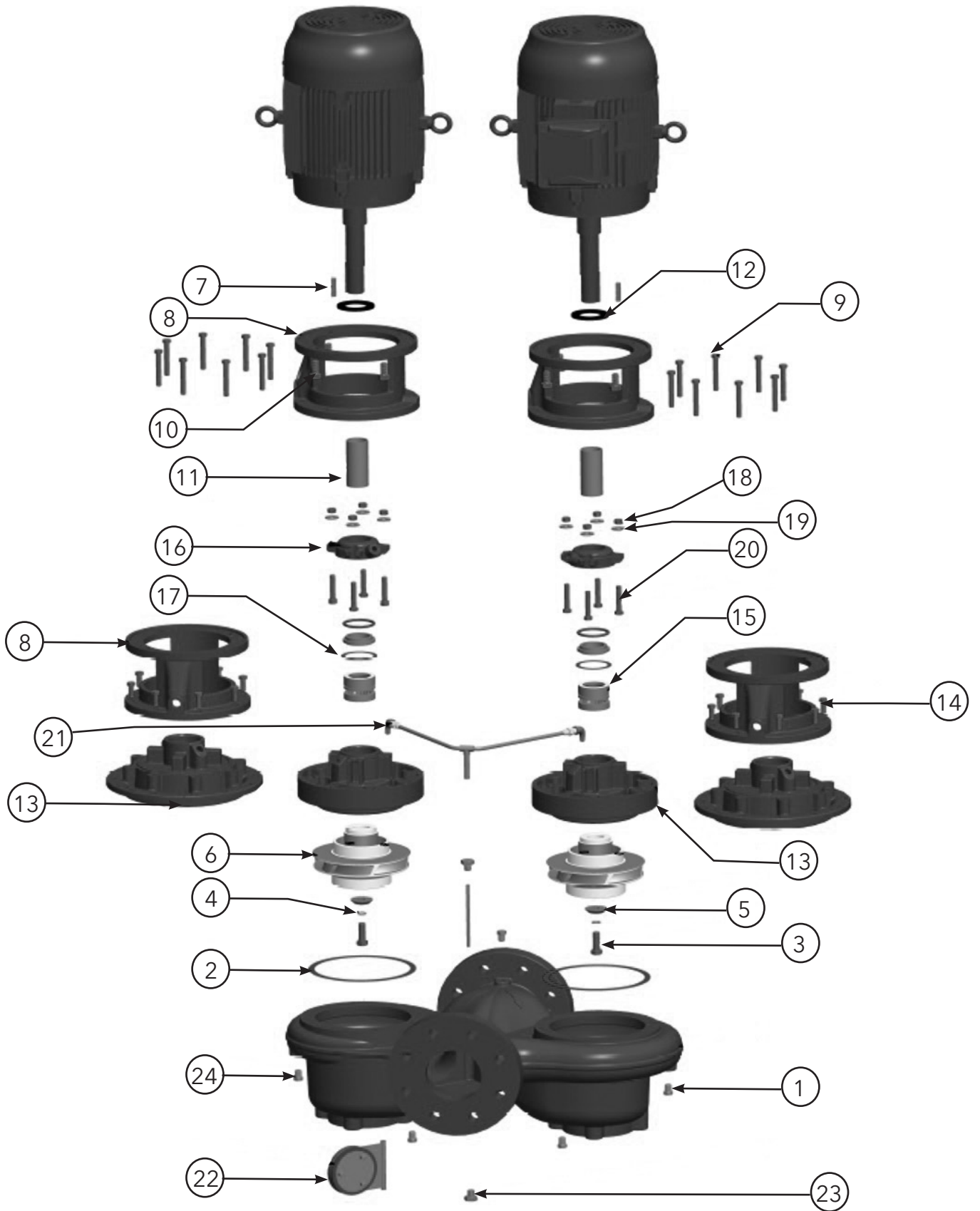
To ensure the correct parts are selected, use the following procedure:

1. Determine from the nameplate the pump size, seal configuration, pump construction and impeller diameter.
2. Measure the shaft diameter.
3. Refer to index for the page number of the parts breakdown for the specific size pump.
4. Find the proper column in the parts breakdown for the pump construction involved.
5. Select part numbers using the exploded view numbered drawing for identification. Where shaft diameter affects parts selection, use the measurement secured in Step 2.
6. Motor brackets vary with motor frame sizes. Use the motor frame number (found on the motor nameplate) to select the proper motor bracket. Supply complete motor nameplate data when ordering replacement motors.

# Standard Seal (-F) – Exploded View



# Stuffing Box (-S) – Exploded View



STANDARD CONFIGURATION (-F)						
ITEM	DESCRIPTION	QTY	2.5X2.5X7	3X3X7	4X4X7	6X6X7
1	Volute	1	P2004898	P2004866	P2004874	P2004921
	Volute with Stainless Steel Wear Ring	1	P2004899	P2004867	P2004875	P2004922
	Stainless Steel Wear Ring	2	P2001195	P2001181	P2001182	P2001645
16	Volute Drains and Suction Gauge Plug - 0.25" NPT	6	P39040	P39040	P39040	P39040
9	Volute Capscrew	16	P40020	P40020	P40020	P40020
2	Volute Gasket	2	P57700	P57700	P57700	P57700
14	Hose Braided	2	P2002542	P2002542	P2002543	P2002543
15	Elbow Street 1/8"	2	J89092	J89092	J89092	J89092
17	Flapper Assembly Kit	1	P2005003	P2005004	P2005008	P2005006
18	Self Sealing Screw	2	P2004967	P2004967	P2004967	P2004967
PARTS FOR PUMPS WITH 1.25" SHAFT SLEEVE DIAMETER AT MECHANICAL SEAL (SMALL BORE)						
6	Impeller (State Diameter) 7" Full Diameter	2	P2000854	P2000850	P2000858	P2001003
3	Impeller Capscrew	2	P52350	P52350	P52350	P52350
4	Impeller Lockwasher	2	J23874	J23874	J23874	J23874
5	Impeller Washer	2	P46380	P46380	P46380	P46380
7	Impeller Key	2	P49369	P49369	P49369	P49369
12	Water Slinger	2	P53550	P53550	P53550	P53550
8	Motor Bracket - Motor Frames 143JM,145JM,182JM,184JM	2	187260	187260	187260	187260
10	Motor Bracket Capscrew - Motor Frames 143JM,145JM,182JM,184JM	8	P40020	P40020	P40020	P40020
8	Motor Bracket - Motor Frames 213JM,215JM	2	187261	187261	187261	187261
10	Motor Bracket Capscrew - Motor Frames 213JM,215JM	8	K03600	K03600	K03600	K03600
13	Seal Kit Standard - Buna / Carbon vs Ceramic	2	186862LF	186862LF	186862LF	186862LF
13	Seal Kit Optional - EPR/ Carbon vs Tungsten	2	186861LF	186861LF	186861LF	186861LF
11	Shaft Sleeve Kit	2	185025	185025	185025	185025
PARTS FOR PUMPS WITH 1.625" SHAFT SLEEVE DIAMETER AT MECHANICAL SEAL (LARGE BORE)						
6	Impeller (State Diameter) 7" Full Diameter	2	P2001149	P2000909	P2000860	P2001005
3	Impeller Capscrew	2	P13800	P13800	P13800	P13800
4	Impeller Lockwasher	2	J23875	J23875	J23875	J23875
5	Impeller Washer	2	P51230	P51230	P51230	P51230
7	Impeller Key	2	P49372	P49372	P49372	P49372
12	Water Slinger	2	P53720	P53720	P53720	P53720
8	Motor Bracket - Motor Frames 254JM,256JM	2	187198	187198	187198	187198
10	Motor Bracket Stud - Motor Frames 254JM,256JM	8	DJ0479	DJ0479	DJ0479	DJ0479
10	Motor Bracket Nut - Motor Frames 254JM,256JM	8	F11400	F11400	F11400	F11400
8	Motor Bracket - Motor Frames 284JM,286JM,324JM,326JM	2	187199	187199	187199	187199
10	Motor Bracket Capscrew - Motor Frames 284JM,286JM,324JM,326JM	8	P19490	P19490	P19490	P19490
13	Seal Kit Standard - Buna / Carbon vs Ceramic	2	186543LF	186543LF	186543LF	186543LF
13	Seal Kit Optional - EPR/ Carbon vs Tungsten	2	185225LF	185225LF	185225LF	185225LF
11	Shaft Sleeve Kit	2	187202	187202	187202	187202

STANDARD CONFIGURATION (-F)						
ITEM	DESCRIPTION	QTY	2.5X2.5X9.5	3X3X9.5	4X4X9.5	6X6X9.5
1	Volute	1	P2004945	P2004738	P2004882	P2004929
	Volute with Stainless Steel Wear Ring	1	P2004946	P2004739	P2004883	P2004930
	Stainless Steel Wear Ring	2	P2001653	P2002294	P2001185	P2001202
16	Volute Drains and Suction Gauge Plug - 0.25" NPT	6	P39040	P39040	P39040	P39040
2	Volute Gasket	2	P48690	P48690	P48690	P48690
14	Hose Braided	2	P2002543	P2002543	P2002543	P2002544
15	Elbow Street 1/8"	2	J89092	J89092	J89092	J89092
17	Flapper assembly	1	P2005003	P2005004	P2005008	P2005006
18	Self sealing screw	2	P2004967	P2004967	P2004967	P2004967
PARTS FOR PUMPS WITH 1.25" SHAFT SLEEVE DIAMETER AT MECHANICAL SEAL (SMALL BORE)						
6	Impeller (State Diameter) 9.5" Full Diameter	2	P2000844	P2001745	P2000828	P2000915
3	Impeller Capscrew	2	P52350	P52350	P52350	P52350
4	Impeller Lockwasher	2	J23874	J23874	J23874	J23874
5	Impeller Washer	2	P46380	P46380	P46380	P46380
7	Impeller Key	2	P49369	P49369	P49369	P49369
12	Water Slinger	2	P53550	P53550	P53550	P53550
9	Volute Capscrew	24	P03470	P03470	P03470	P03470
8	Motor Bracket - Motor Frames 143JM,145JM,182JM,184JM	2	187262	187262	187262	187262
10	Motor Bracket Capscrew - Motor Frames 143JM,145JM,182JM,184JM	8	P40020	P40020	P40020	P40020
8	Motor Bracket - Motor Frames 213JM,215JM	2	187263	187263	187263	187263
10	Motor Bracket Capscrew - Motor Frames 213JM,215JM	8	K03600	K03600	K03600	K03600
13	Seal Kit Standard - Buna / Carbon vs Ceramic	2	186862LF	186862LF	186862LF	186862LF
13	Seal Kit Optional - EPR/ Carbon vs Tungsten	2	186861LF	186861LF	186861LF	186861LF
11	Shaft Sleeve Kit	2	185025	185025	185025	185025
PARTS FOR PUMPS WITH 1.625" SHAFT SLEEVE DIAMETER AT MECHANICAL SEAL (LARGE BORE)						
6	Impeller (State Diameter) 9.5" Full Diameter	2	P2000846	P2001747	P2000830	P2000917
3	Impeller Capscrew	2	P13800	P13800	P13800	P13800
4	Impeller Lockwasher	2	J23875	J23875	J23875	J23875
5	Impeller Washer	2	P51230	P51230	P51230	P51230
7	Impeller Key	2	P49372	P49372	P49372	P49372
12	Water Slinger	2	P53720	P53720	P53720	P53720
9	Volute Capscrew - Motor Frames 254JM,256JM	24	P03470	P03470	P03470	P03470
8	Motor Bracket - Motor Frames 254JM,256JM	2	187200	187200	187200	187200
10	Motor Bracket Stud - Motor Frames 254JM,256JM	8	DJ0479	DJ0479	DJ0479	DJ0479
10	Motor Bracket Nut - Motor Frames 254JM,256JM	8	F11400	F11400	F11400	F11400
9	Volute Capscrew - Motor Frames 284JM,286JM,324JM,326JM	24	P54700	P54700	P54700	P54700
8	Motor Bracket - Motor Frames 284JM,286JM,324JM,326JM	2	187201	187201	187201	187201
10	Motor Bracket Capscrew - Motor Frames 284JM,286JM,324JM,326JM	8	P19490	P19490	P19490	P19490
13	Seal Kit Standard - Buna / Carbon vs Ceramic	2	186543LF	186543LF	186543LF	186543LF
13	Seal Kit Optional - EPR/ Carbon vs Tungsten	2	185225LF	185225LF	185225LF	185225LF
11	Shaft Sleeve Kit	2	187202	187202	187202	187202

STANDARD CONFIGURATION (-F)					
ITEM	DESCRIPTION	QTY	3X3X11	4X4X11	6X6X11
1	Volute	1	P2004746	P2004890	P2004937
	Volute with Stainless Steel Wear Ring	1	P2004747	P2004891	P2004938
	Stainless Steel Wear Ring	2	P2001666	P2002312	P2002321
16	Volute Drains and Suction Gauge Plug - 0.25" NPT	6	P39040	P39040	P39040
2	Volute Gasket	2	P80765	P80765	P80765
14	Hose Braided	2	P2002543	P2002543	P2002544
15	Elbow Street 1/8"	2	J89092	J89092	J89092
17	Flapper assembly	1	P2005004	P2005008	P2005006
18	Self sealing screw	2	P2004967	P2004967	P2004967
PARTS FOR PUMPS WITH 1.25" SHAFT SLEEVE DIAMETER AT MECHANICAL SEAL (SMALL BORE)					
6	Impeller (State Diameter) 11" Full Diameter	2	P2000874	P2001171	N/A
3	Impeller Capscrew	2	P52350	P52350	
4	Impeller Lockwasher	2	J23874	J23874	
5	Impeller Washer	2	P46380	P46380	
7	Impeller Key	2	P49369	P49369	
12	Water Slinger	2	P53550	P53550	
9	Volute Capscrews - Motor Frames 213JM, 215JM	32	P13780	P13780	
8	Motor Bracket - Motor Frames 213JM, 215JM	2	187266	187266	
10	Motor Bracket Capscrew - Motor Frames 213JM, 215JM	8	K03600	K03600	
13	Seal Kit Standard - Buna / Carbon vs Ceramic	2	186862LF	186862LF	
13	Seal Kit Optional - EPR/ Carbon vs Tungsten	2	186861LF	186861LF	
11	Shaft Sleeve Kit	2	185025	185025	
PARTS FOR PUMPS WITH 1.625" SHAFT SLEEVE DIAMETER AT MECHANICAL SEAL (LARGE BORE)					
6	Impeller (State Diameter) 11" Full Diameter	2	P2000876	P2001173	P2001146
3	Impeller Capscrew	2	P13800	P13800	P13800
4	Impeller Lockwasher	2	J23875	J23875	J23875
5	Impeller Washer	2	P51230	P51230	P51230
7	Impeller Key	2	P49372	P49372	P49372
12	Water Slinger	2	P53720	P53720	P53720
9	Volute Capscrews - Motor Frames 254JM, 256JM	32	P13780	P13780	P13780
8	Motor Bracket - Motor Frames 254JM, 256JM	2	P2002504	P2002504	P2002504
10	Motor Bracket Stud - Motor Frames 254JM, 256JM	8	DJ0479	DJ0479	DJ0479
10	Motor Bracket Nut - Motor Frames 254JM, 256JM	8	F11400	F11400	F11400
9	Volute Studs - Motor Frames 284JM, 286JM, 324JM, 326JM	32	DJ0479	DJ0479	DJ0479
9	Volute Nuts - Motor Frames 284JM, 286JM, 324JM, 326JM	32	F11400	F11400	F11400
8	Motor Bracket - Motor Frames 284JM, 286JM, 324JM, 326JM	2	P2002506	P2002506	P2002506
10	Motor Bracket Stud - Motor Frames 284JM, 286JM, 324JM, 326JM	8	P2002540	P2002540	P2002540
10	Motor Bracket Nut - Motor Frames 284JM, 286JM, 324JM, 326JM	8	P2002541	P2002541	P2002541
13	Seal Kit Standard - Buna / Carbon vs Ceramic (2)	2	186543LF	186543LF	186543LF
13	Seal Kit Optional - EPR/ Carbon vs Tungsten	2	185225LF	185225LF	185225LF
11	Shaft Sleeve Kit (2)	2	187202	187202	187202



STUFFING BOX CONFIGURATION (-S)						
ITEM	DESCRIPTION	QTY	2.5X2.5X7	3X3X7	4X4X7	6X6X7
1	Volute	1	P2004898	P2004866	P2004874	P2004921
	Volute with Stainless Steel Wear Ring	1	P2004899	P2004867	P2004875	P2004922
	Stainless Steel Wear Ring	2	P2001195	P2001181	P2001182	P2001645
24	Volute and Bracket Plugs - 0.25" NPT	6	P39040	P39040	P39040	P39040
2	Volute Gasket	2	P57700	P57700	P57700	P57700
21	Hose Braided	2	P2002542	P2002542	P2002543	P2002543
21	Adapter 1/4 to 1/8 NPT	4	511849	511849	511849	511849
21	Pipe Nipple 1/4	2	S26300	S26300	S26300	S26300
21	Tee 1/4	2	S39740	S39740	S39740	S39740
21	Valve, Vent 1/8	2	P75255	P75255	P75255	P75255
22	Flapper assembly	1	P2005003	P2005004	P2005008	P2005006
23	Self sealing screw	2	P2004967	P2004967	P2004967	P2004967
PARTS FOR PUMPS WITH 1.25" SHAFT SLEEVE DIAMETER AT MECHANICAL SEAL (SMALL BORE)						
9	Volute Capscrew	16	P40020	P40020	P40020	P40020
13	Volute Coverplate	2	P85027	P85027	P85027	P85027
14	Volute Coverplate Capscrew	8	P52320	P52320	P52320	P52320
6	Impeller (State Diameter) 7" Full Diameter	2	P2000854	P2000850	P2000858	P2001003
3	Impeller Capscrew	2	P52350	P52350	P52350	P52350
4	Impeller Lockwasher	2	J23874	J23874	J23874	J23874
5	Impeller Washer	2	P46380	P46380	P46380	P46380
7	Impeller Key	2	P49369	P49369	P49369	P49369
12	Water Slinger	2	P53550	P53550	P53550	P53550
8	Motor Bracket - Motor Frames 143JP, 145JP, 182JP, 184JP	2	P85023	P85023	P85023	P85023
10	Motor Bracket Capscrew - Motor Frames 143JP, 145JP, 182JP, 184JP	8	P40020	P40020	P40020	P40020
11	Shaft Sleeve Kit	2	185025	185025	185025	185025
15	Seal Assembly EPR / Carbon vs Tungsten Carbide	2	186861LF	186861LF	186861LF	186861LF
16	Seal Cap	2	P85082	P85082	P85082	P85082
20	Seal Cap Capscrew	8	H28200	H28200	H28200	H28200
18	Seal Cap Nut	8	P52380	P52380	P52380	P52380
19	Seal Cap Washer	8	P10910	P10910	P10910	P10910
17	Seal Cap Gasket	2	P85077	P85077	P85077	P85077
PARTS FOR PUMPS WITH 1.625" SHAFT SLEEVE DIAMETER AT MECHANICAL SEAL (LARGE BORE)						
14	Volute and Coverplate Capscrew	16	DJ0081	DJ0081	DJ0081	DJ0081
13	Volute Coverplate	2	P85035	P85035	P85035	P85035
6	Impeller (state diameter) 7" Full Diameter	2	P2001149	P2000909	P2000860	P2001005
3	Impeller Capscrew	2	P13800	P13800	P13800	P13800
4	Impeller Lockwasher	2	J23875	J23875	J23875	J23875
5	Impeller Washer	2	P51230	P51230	P51230	P51230
7	Impeller Key	2	P49372	P49372	P49372	P49372
12	Water Slinger	2	P77320	P77320	P77320	P77320
8	Motor Bracket - Motor Frames 213JP, 215JP, 254JP, 256JP	2	P85025	P85025	P85025	P85025
10	Motor Bracket Capscrew - Motor Frames 213JP, 215JP, 254JP, 256JP	8	K03600	K03600	K03600	K03600
8	Motor Bracket - Motor Frames 284JP, 286JP, 324JP, 326JP	2	P85099	P85099	P53880	P53880
10	Motor Bracket Capscrew - Motor Frames 284JP, 286JP, 324JP, 326JP	8	P19490	P19490	P19490	P19490
11	Shaft Sleeve Kit	2	187202	187202	187202	187202
15	Seal Assembly EPR / Carbon vs Tungsten Carbide	2	185225LF	185225LF	185225LF	185225LF
16	Seal Cap	2	P85086	P85086	P85086	P85086
20	Seal Cap Capscrew	8	H28200	H28200	H28200	H28200
18	Seal Cap Nut	8	P52380	P52380	P52380	P52380
19	Seal Cap Washer	8	P10910	P10910	P10910	P10910
17	Seal Cap Gasket	2	P85078	P85078	P85078	P85078

STUFFING BOX CONFIGURATION (-S)						
ITEM	DESCRIPTION	QTY	2.5X2.5X9.5	3X3X9.5	4X4X9.5	6X6X9.5
1	Volute	1	P2004945	P2004738	P2004882	P2004929
	Volute with Stainless Steel Wear Ring	1	P2004946	P2004739	P2004883	P2004930
	Stainless Steel Wear Ring	2	P2001653	P2002294	P2001185	P2001202
24	Volute and Bracket Plugs - 0.25" NPT	6	P39040	P39040	P39040	P39040
9	Volute Capscrew for Frame Sizes thru 256JP	24	P03470	P03470	P03470	P03470
9	Volute Capscrew for Frame Sizes 284JP and Larger	24	P54700	P54700	P54700	P54700
2	Volute Gasket	2	P48690	P48690	P48690	P48690
21	Hose Braided	2	P2002543	P2002543	P2002543	P2002544
21	Adapter 1/4 to 1/8 NPT	4	511849	511849	511849	511849
21	Pipe Nipple 1/4	2	S26300	S26300	S26300	S26300
21	Tee 1/4	2	S39740	S39740	S39740	S39740
21	Valve, Vent 1/8	2	P75255	P75255	P75255	P75255
22	Flapper assembly	1	P2005003	P2005004	P2005008	P2005006
23	Self sealing screw	2	P2004967	P2004967	P2004967	P2004967
PARTS FOR PUMPS WITH 1.25" SHAFT SLEEVE DIAMETER AT MECHANICAL SEAL (SMALL BORE)						
13	Volute Coverplate	2	P85031	P85031	P85031	N/A
14	Volute Coverplate Capscrew (8)	8	P52320	P52320	P52320	
6	Impeller (State Diameter) 9.5" Full Diameter (2)	2	P2000844	P2001745	P2000828	
3	Impeller Capscrew (2)	2	P52350	P52350	P52350	
4	Impeller Lockwasher (2)	2	J23874	J23874	J23874	
5	Impeller Washer (2)	2	P46380	P46380	P46380	
7	Impeller Key (2)	2	P49369	P49369	P49369	
12	Water Slinger (2)	2	P53550	P53550	P53550	
8	Motor Bracket - Motor Frames 143JP,145JP,182JP,184JP (2)	2	P85023	P85023	P85023	
10	Motor Bracket Capscrew - Motor Frames 143JP, 145JP, 182JP, 184JP (8)	8	P40020	P40020	P52320	
11	Shaft Sleeve Kit	2	185025	185025	185025	
15	Seal Assembly EPR / Carbon vs Tungsten Carbide (2)	2	186861LF	186861LF	186861LF	
16	Seal Cap (2)	2	P85082	P85082	P85082	
20	Seal Cap Capscrew (8)	8	H28100	H28100	H28100	
18	Seal Cap Nut (8)	8	P52380	P52380	P52380	
19	Seal Cap Washer (8)	8	P10910	P10910	P10910	
17	Seal Cap Gasket (2)	2	P85077	P85077	P85077	
PARTS FOR PUMPS WITH 1.625" SHAFT SLEEVE DIAMETER AT MECHANICAL SEAL (LARGE BORE)						
14	Volute and Coverplate Capscrew	16	P52320	P52320	P52320	P52320
13	Volute Coverplate	2	P85039	P85039	P85039	P85039
6	Impeller (state diameter) 9.5" Full Diameter	2	P2000846	P2001747	P2000830	P2000917
3	Impeller Capscrew	2	P13800	P13800	P13800	P13800
4	Impeller Lockwasher	2	J23875	J23875	J23875	J23875
5	Impeller Washer	2	P51230	P51230	P51230	P51230
7	Impeller Key	2	P49372	P49372	P49372	P49372
12	Water Slinger	2	P77320	P77320	P77320	P77320
8	Motor Bracket - Motor Frames 213JP, 215JP, 254JP, 256JP	2	P85025	P85025	P85025	P85025
10	Motor Bracket Capscrew - Motor Frames 213JP, 215JP, 254JP, 256JP	8	K03600	K03600	K03600	K03600
8	Motor Bracket - Motor Frames 284JP, 286JP, 324JP, 326JP	2	P85099	P85099	P85099	P85099
10	Motor Bracket Capscrew - Motor Frames 284JP, 286JP, 324JP, 326JP	8	P19490	P19490	P19490	P19490
11	Shaft Sleeve Kit	2	187202	187202	187202	187202
15	Seal Assembly EPR / Carbon vs Tungsten Carbide	2	185225LF	185225LF	185225LF	185225LF
16	Seal Cap	2	P85086	P85086	P85086	P85086
20	Seal Cap Capscrew	8	H28200	H28200	H28200	H28200
18	Seal Cap Nut	8	P52380	P52380	P52380	P52380
19	Seal Cap Washer	8	P10910	P10910	P10910	P10910
17	Seal Cap Gasket	2	P85078	P85078	P85078	P85078

<b>STUFFING BOX CONFIGURATION (-S)</b>					
<b>ITEM</b>	<b>DESCRIPTION</b>	<b>QTY</b>	<b>3X3X11</b>	<b>4X4X11</b>	<b>6X6X11</b>
1	Volute	1	P2004746	P2004890	P2004937
	Volute with Stainless Steel Wear Ring	1	P2004747	P2004891	P2004938
	Stainless Steel Wear Ring	2	P2001666	P2002312	P2002321
24	Volute and Bracket Plugs - 0.25" NPT	6	P39040	P39040	P39040
9	Volute Capscrew	32	P13780	P13780	P13780
2	Volute Gasket	2	P80765	P80765	P80765
21	Hose Braided	2	P2002543	P2002543	P2002544
21	Adapter 1/4 to 1/8 NPT	4	511849	511849	511849
21	Pipe Nipple 1/4	2	DL0025	DL0025	DL0025
21	Tee 1/4	2	S39740	S39740	S39740
21	Valve, Vent 1/8	2	P75255	P75255	P75255
22	Flapper assembly	1	P2005004	P2005008	P2005006
23	Self sealing screw	1	P2004967	P2004967	P2004967
<b>PARTS FOR PUMPS WITH 1.625" SHAFT SLEEVE DIAMETER AT MECHANICAL SEAL (LARGE BORE)</b>					
13	Volute Coverplate	2	P53056	P53056	P53056
14	Volute Coverplate Capscrew	16	P52320	P52320	P52320
6	Impeller (state diameter) 11" Full Diameter	2	P2000876	P2001173	P2001146
3	Impeller Capscrew	2	P13800	P13800	P13800
4	Impeller Lockwasher	2	J23875	J23875	J23875
5	Impeller Washer	2	P51230	P51230	P51230
7	Impeller Key	2	P49372	P49372	P49372
12	Water Slinger	2	P77320	P77320	P77320
8	Motor Bracket - Motor Frames 213JP, 215JP, 254JP, 256JP	2	P85025	P85025	P85025
10	Motor Bracket Capscrew - Motor Frames 213JP, 215JP, 254JP, 256JP	8	K03600	K03600	K03600
8	Motor Bracket - Motor Frames 284JP, 286JP, 324JP, 326JP	2	P85099	P85099	P85099
10	Motor Bracket Capscrew - Motor Frames 284JP, 286JP, 324JP, 326JP	8	P19490	P19490	P19490
11	Shaft Sleeve Kit	2	187202	187202	187202
15	Seal Assembly EPR / Carbon vs Tungsten Carbide	2	185225LF	185225LF	185225LF
16	Seal Cap	2	P85086	P85086	P85086
20	Seal Cap Capscrew	8	H28200	H28200	H28200
19	Seal Cap Washer	8	P10910	P10910	P10910
17	Seal Cap Gasket	2	P85078	P85078	P85078

# Xylem |'zīləm|

- 1) The tissue in plants that brings water upward from the roots;
- 2) a leading global water technology company.

We're a global team unified in a common purpose: creating advanced technology solutions to the world's water challenges. Developing new technologies that will improve the way water is used, conserved, and re-used in the future is central to our work. Our products and services move, treat, analyze, monitor and return water to the environment, in public utility, industrial, residential and commercial building services settings. Xylem also provides a leading portfolio of smart metering, network technologies and advanced analytics solutions for water, electric and gas utilities. In more than 150 countries, we have strong, long-standing relationships with customers who know us for our powerful combination of leading product brands and applications expertise with a strong focus on developing comprehensive, sustainable solutions.

**For more information on how Xylem can help you, go to [www.xylem.com](http://www.xylem.com)**



Xylem Inc.  
8200 N. Austin Avenue  
Morton Grove, Illinois 60053  
Phone: (847) 966-3700  
Fax: (847) 965-8379  
[www.xylem.com/bellgossett](http://www.xylem.com/bellgossett)

Bell & Gossett is a trademark of Xylem Inc. or one of its subsidiaries.  
© 2020 Xylem Inc. CP-20e80-100-PL September 2020