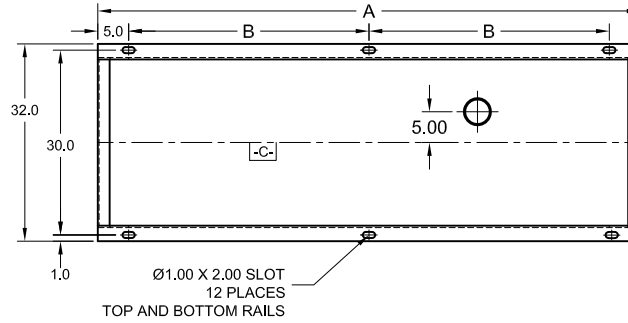


CLARKE FIRE PUMP DRIVERS
EPA NSPS TIER IT4 ENGINE MODELS
HSC 8200 SERIES PUMPS

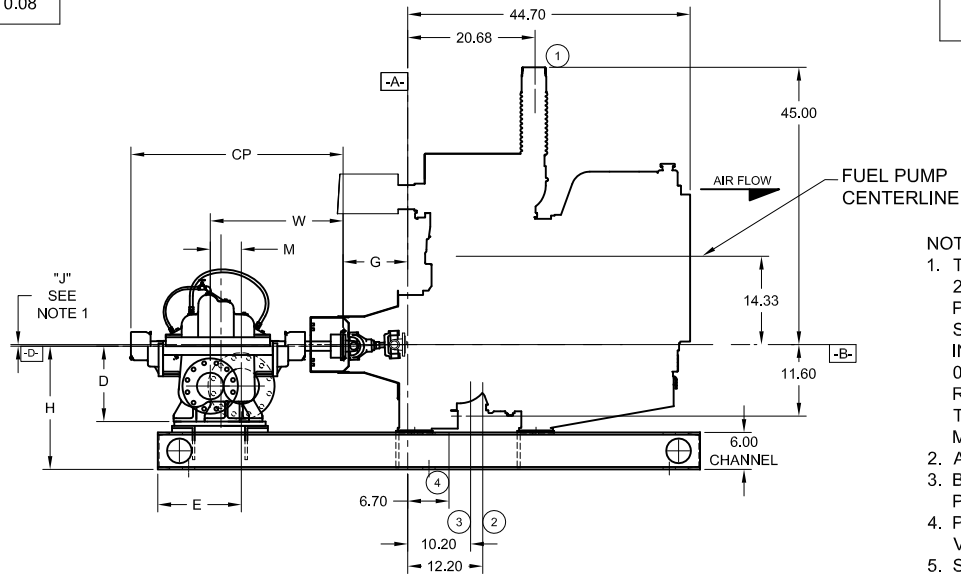
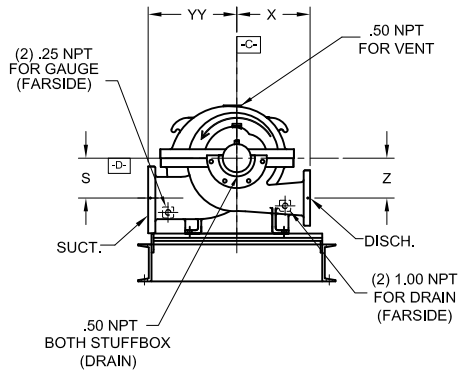


- A- - MOUNTING FACE OF FLYWHEEL
- B- - ENGINE CRANKSHAFT HORIZONTAL CENTERLINE
- C- - ENGINE CRANKSHAFT VERTICAL CENTERLINE
- D- - PUMP SHAFT HORIZONTAL CENTERLINE



UL LISTED DRIVESHAFT				
ENGINE MODEL	DRIVESHAFT MODEL	DIM: G	DIM: J	DIM: K
JU4R-UFAEA9	CDS10-SC	10.50	0.25	0.09
JU4R-UFAEE7, F1	CDS20-SC	11.00	0.25	0.08

ITEM NO.	DESCRIPTION	CONNECTION SIZE
①	EXHAUST OUTLET CONNECTION	3" NPT FLEX EXHAUST
②	FUEL SUPPLY CONNECTION (FARSIDE)	1/2" NPTF
③	FUEL RETURN CONNECTION (FARSIDE)	3/8" NPTF
④	HEATER JUNCTION BOX	VOLTAGE REQUIREMENTS: AC CONNECTION HEATER 1500 WATTS STD -115VAC +5% -10% OPT -230VAC +5% -10%



NOTES:

- THE DRIVE SHAFT IS DESIGNED TO OPERATE AT A 2° ANGLE WITH THE INPUT AND OUTPUT SHAFTS IN PARALLEL. THE ENGINE CRANKSHAFT IS TO BE SET WITH A PARALLEL OFFSET OF "J" ± "K" INCHES VERTICALLY ABOVE THE PUMP SHAFT AND 0.00" ± "K" INCH PARALLEL OFFSET HORIZONTALLY RIGHT OR LEFT OF THE PUMP SHAFT. REFER TO THE CERTIFIED DRIVESHAFT INSTRUCTIONS MANUAL FOR ALIGNMENT INSTRUCTIONS.
- ALL DIMENSIONS ARE IN INCHES.
- BASE MUST BE COMPLETELY FILLED WITH GROUT PER NFPA 20.
- PUMP IS CW (CLOCKWISE) ROTATION WHEN VIEWED FROM THE COUPLING END.
- SUCTION AND DISCHARGE FLANGES DRILLED PER ANSI B16.1 (IF APPLICABLE).

PUMP MODEL	PUMP SIZE		DIMENSIONS											
	SUCT.	DISCH.	A	B	H	E	M	W	CP	D	YY	X	S	Z
8X6X14F-S	8	6	108	49	24	29.13	7.00	27.88	45.75	17.00	20.00	16.50	9.00	9.00
8X6X18F	8	6	98	44	26	29.12	7.00	27.88	19.00	20.00	16.50	11.00	11.00	5.25

NOT FOR CONSTRUCTION, INSTALLATION OR APPLICATION PURPOSES UNLESS CERTIFIED.								
CERTIFIED FOR:							APPROVAL	
CUSTOMER ORDER NO:							IDENTIFICATION NO:	
PUMP DATA							FLANGES	
ENGINE DATA							MAX ALTITUDE	
SHOP ORDER:							CERTIFIED BY:	
TOTAL WEIGHT							DATE:	