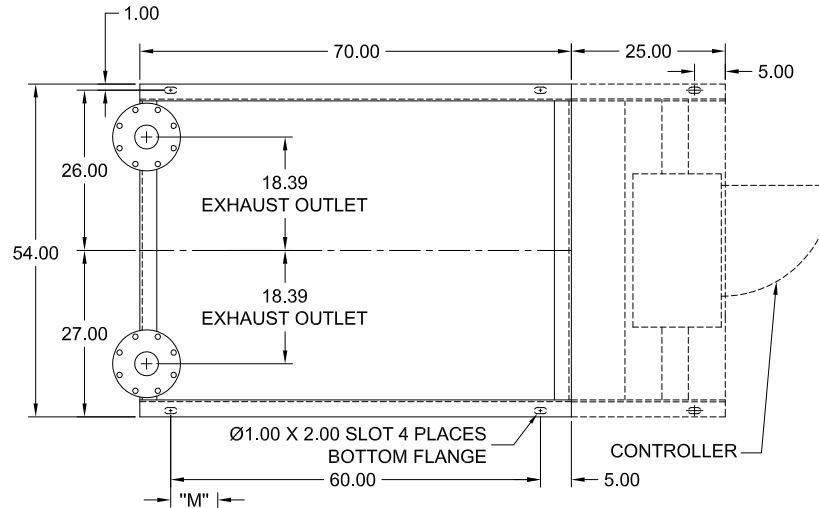


CLARKE FIRE PUMP DRIVERS  
NON-EMISSION ENGINE MODELS  
VT APPLICATIONS



a xylem brand  
Vertical Turbine

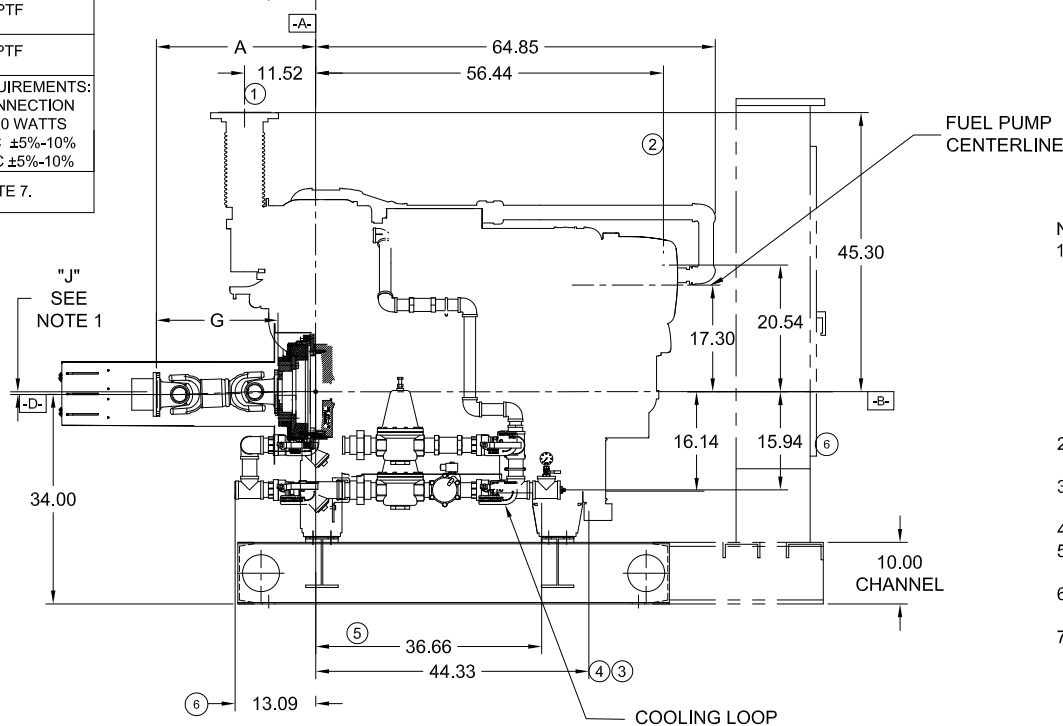
- A- - MOUNTING FACE OF FLYWHEEL
- B- - ENGINE CRANKSHAFT HORIZONTAL CENTERLINE
- C- - ENGINE CRANKSHAFT VERTICAL CENTERLINE
- D- - PUMP SHAFT HORIZONTAL CENTERLINE



| NON-LISTED DRIVESHAFT |                  |       |       |       |       |
|-----------------------|------------------|-------|-------|-------|-------|
| ENGINE MODEL          | DRIVESHAFT MODEL | DIM:G | DIM:J | DIM:K | DIM:M |
| DT2H-UFAA60           | SC2160A          | 19.75 | 0.45  | 0.15  | 7.62  |
| DT2H-UFAA92, -98      | SC2390           | 27.00 | 0.65  | 0.25  | 4.88  |

| ITEM NO. | DESCRIPTION                     | CONNECTION SIZE  |
|----------|---------------------------------|--|
| ①        | EXHAUST OUTLET CONNECTION       | 6" 150# FLG.   |
| ②        | RAW WATER OUTLET                | SEE NOTE 6.  |
| ③        | FUEL SUPPLY CONNECTION -FARSIDE | 3/4" NPTF  |
| ④        | FUEL RETURN CONNECTION -FARSIDE | 1/2" NPTF  |
| ⑤        | HEATER JUNCTION BOX             | VOLTAGE REQUIREMENTS:<br>DUAL AC CONNECTION<br>HEATER 2500 WATTS<br>STD- 230 VAC ±5%-10%<br>OPT- 115 VAC ±5%-10% |
| ⑥        | RAW WATER INLET                 | SEE NOTE 7.  |

| TORSIONAL COUPLINGS |                   |       |
|---------------------|-------------------|-------|
| ENGINE MODEL        | COUPLING MODEL    | DIM:A |
| DT2H-UFAA60         | TC60-14-180.10 FS | 25.06 |
| DT2H-UFAA92, -98    | TC60-14-180.10 FS | 32.31 |



NOTES:

1. THE DRIVE SHAFT IS DESIGNED TO OPERATE AT A 2° ANGLE WITH THE INPUT AND OUTPUT SHAFTS IN PARALLEL. THE ENGINE CRANKSHAFT IS TO BE SET WITH A PARALLEL OFFSET OF "J" ± "K" INCHES VERTICALLY ABOVE THE PUMP SHAFT AND 0.00" ± "K" INCH PARALLEL OFFSET HORIZONTALLY RIGHT OR LEFT OF THE PUMP SHAFT. REFER TO THE CERTIFIED DRIVESHAFT INSTRUCTIONS MANUAL FOR ALIGNMENT INSTRUCTIONS.
2. BASE MUST BE COMPLETELY FILLED WITH GROUT PER NFPA 20.
3. ENGINE IS CW (CLOCKWISE) ROTATION WHEN VIEWED FROM THE HEAT EXCHANGER/FRONT.
4. ALL DIMENSIONS ARE IN INCHES.
5. SUCTION AND DISCHARGE FLANGES DRILLED PER ANSI B16.1 (IF APPLICABLE).
6. RAW WATER OUTLET SIZE VARIES BASED UPON SITE CONDITIONS. DEFAULT SIZE: 1-1/2" NPT.
7. RAW WATER INLET SIZE VARIES BASED ON SITE CONDITIONS.

| NOT FOR CONSTRUCTION, INSTALLATION OR APPLICATION PURPOSES UNLESS CERTIFIED. |       |           |     |              |          |               |                    |       |
|--|-------|-----------|-----|--------------|----------|---------------|--------------------|-------|
| CERTIFIED FOR:   |       |           |     |              |          |               | APPROVAL           |       |
| CUSTOMER ORDER NO:   |       |           |     |              |          |               | IDENTIFICATION NO: |       |
| PUMP DATA  |       |           |     |              |          |               | FLANGES            |       |
| SIZE   | MODEL | CURVE NO. | GPM | HEAD (FT.)   | ROTATION | SUCTION       | DISCHARGE          |       |
| ENGINE DATA  |       |           |     |              |          | MAX ALTITUDE  |                    |       |
| MAKE   | MODEL | HP        | RPM | VOLTAGE      | POLARITY |               |                    |       |
| SHOP ORDER:  |       |           |     |              |          | CERTIFIED BY: |                    | DATE: |
|  |       |           |     | TOTAL WEIGHT |          |               |                    |       |