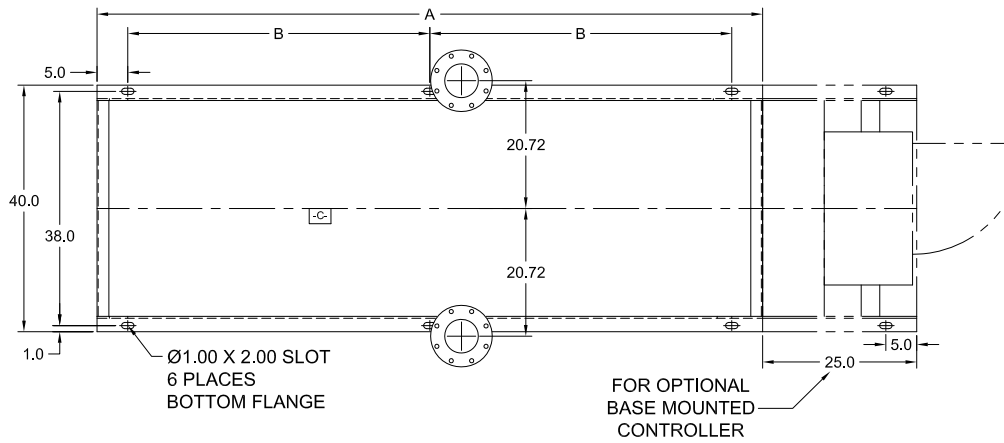


# CLARKE FIRE PUMP DRIVERS NON-EMISSION ENGINE MODELS HSC 8100 & 9100 SERIES PUMPS

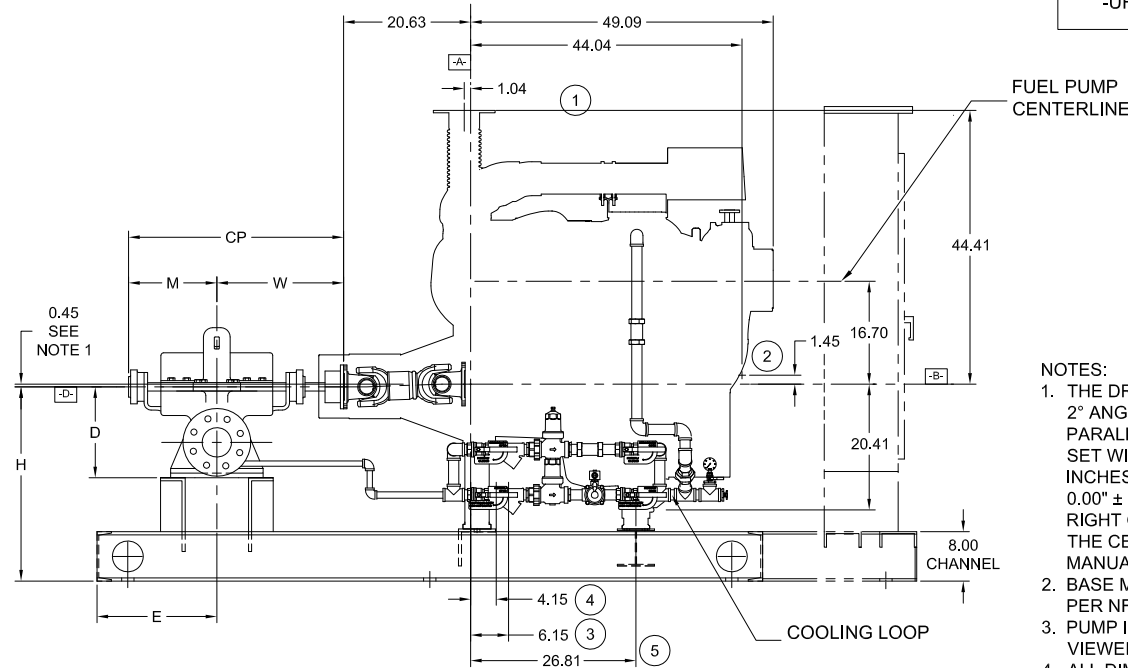
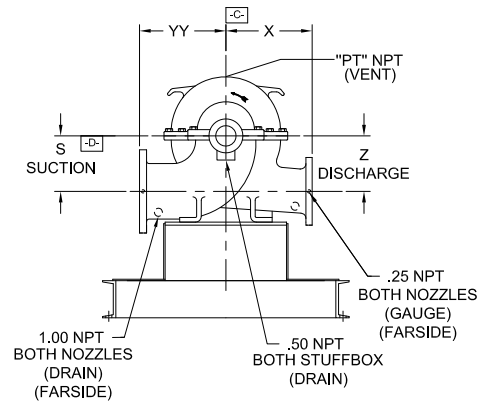


- A- - MOUNTING FACE OF FLYWHEEL
- B- - ENGINE CRANKSHAFT HORIZONTAL CENTERLINE
- C- - ENGINE CRANKSHAFT VERTICAL CENTERLINE
- D- - PUMP SHAFT HORIZONTAL CENTERLINE



ITEM NO.	DESCRIPTION	CONNECTION SIZE
①	EXHAUST OUTLET CONNECTION	5" FLEX EXHAUST
②	RAW WATER OUTLET	SEE NOTE 6.
③	FUEL SUPPLY CONNECTION	3/4" NPTF
④	FUEL RETURN CONNECTION	1/2" NPTF
⑤	HEATER JUNCTION BOX	VOLTAGE REQUIREMENTS: AC CONNECTION HEATER 2500 WATTS STD- 230 VAC ±5%-10% OPT- 115 VAC ±5%-10%

NON-LISTED DRIVESHAFT	
ENGINE MODEL	DRIVESHAFT MODEL
DR8H-UFAA40, -UFAA5G, -UFAA68, -UFAA62	SC2160A



**NOTES:**

1. THE DRIVE SHAFT IS DESIGNED TO OPERATE AT A 2° ANGLE WITH THE INPUT AND OUTPUT SHAFTS IN PARALLEL. THE ENGINE CRANKSHAFT IS TO BE SET WITH A PARALLEL OFFSET OF 0.45 ± 0.15 INCHES VERTICALLY ABOVE THE PUMP SHAFT AND 0.00" ± 0.15 INCH PARALLEL OFFSET HORIZONTALLY RIGHT OR LEFT OF THE PUMP SHAFT. REFER TO THE CERTIFIED DRIVESHAFT INSTRUCTIONS MANUAL FOR ALIGNMENT INSTRUCTIONS.
2. BASE MUST BE COMPLETELY FILLED WITH GROUT PER NFPA 20.
3. PUMP IS CW (CLOCKWISE) ROTATION WHEN VIEWED FROM THE COUPLING END.
4. ALL DIMENSIONS ARE IN INCHES.
5. SUCTION AND DISCHARGE FLANGES DRILLED PER ANSI B16.1 (IF APPLICABLE).
6. RAW WATER DRAIN PIPING SIZE VARIES BASED UPON SITE CONDITIONS. ENGINE CONN. SIZE: 1-1/2" NPT

PUMP TYPE	PUMP SIZE		DIMENSIONS												
	SUCT.	DISCH.	A	B	H	E	M	W	CP	D	YY	X	S	Z	PT
8100 SERIES															
10x8x20 F	10	8	108	49	32	17.44	17.00	22.56	39.56	20.00	20.00	18.00	14.00	14.00	0.50
12x10x18 F	12	10	108	49	32	17.44	17.00	22.56	39.56	18.00	20.00	18.00	11.00	11.00	0.50
9100 SERIES															
12x8x21 F	12	8	118	54	32	21.75	21.75	28.25	50.00	19.00	21.00	21.00	12.00	12.00	1.00
12x8x22 F	12	8	118	54	32	21.75	21.75	28.25	50.00	19.00	21.00	21.00	12.00	12.00	1.00
14x10x20 F	14	10	118	54	34	19.50	23.75	30.50	54.25	21.00	21.00	19.00	13.00	13.00	1.00
16x12x23 F	16	12	118	54	32	19.50	23.75	30.50	54.25	23.00	25.00	25.00	14.00	14.00	1.00

NOT FOR CONSTRUCTION, INSTALLATION OR APPLICATION PURPOSES UNLESS CERTIFIED.									
CERTIFIED FOR:							APPROVAL		
							UL	FM	ULC
CUSTOMER ORDER NO:				IDENTIFICATION NO:			FLANGES		
PUMP DATA	SIZE	MODEL	CURVE NO.	GPM	HEAD (FT.)	ROTATION	SUCTION	DISCHARGE	
							CW		
ENGINE DATA	MAKE	MODEL	HP	RPM	VOLTAGE	POLARITY	MAX ALTITUDE		
	CLARKE						NEG.		
SHOP ORDER:			CERTIFIED BY:			TOTAL WEIGHT		DATE:	

ALL VIEWS 3rd ANGLE PROJECTION