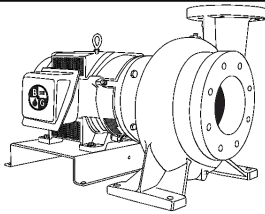


JOB:	REPRESENTATIVE:	
UNIT TAG:	ORDER NO.:	DATE:
ENGINEER:	SUBMITTED BY:	DATE:
CONTRACTOR:	APPROVED BY:	DATE:



8GB

Series e-1532

Close-Coupled Centrifugal Pumps

SPECIFICATIONS

FLOW _____ HEAD _____

HP _____ RPM _____

VOLTS _____

CYCLE _____ PHASE _____

ENCLOSURE _____

APPROX. WEIGHT _____

SPECIALS _____

MATERIALS OF CONSTRUCTION

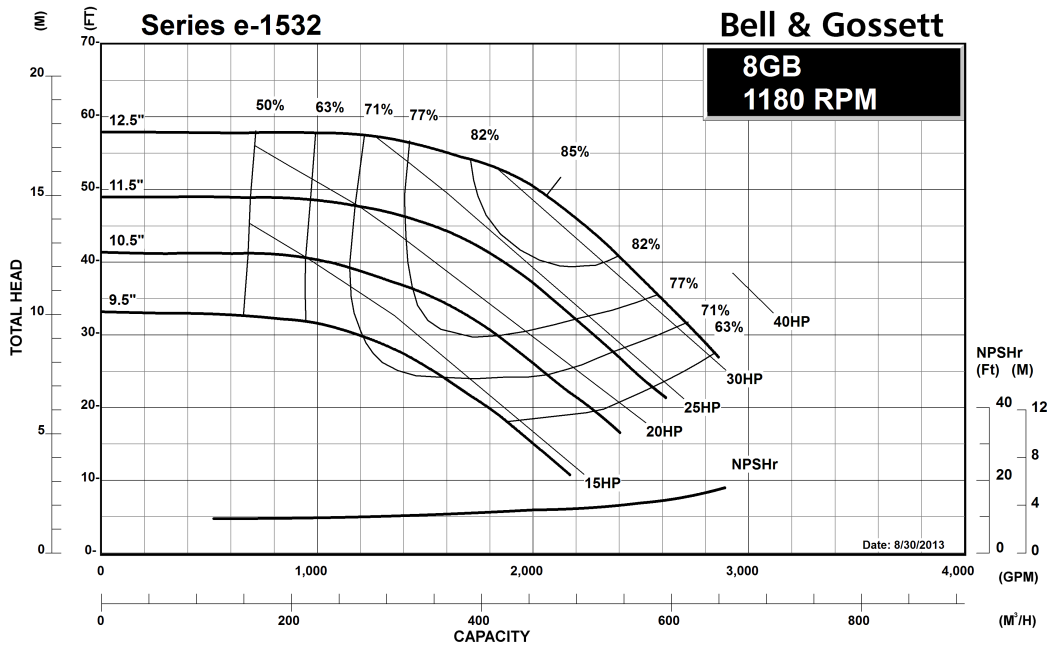
Stainless Steel Fitted

MAXIMUM WORKING PRESSURE

175 psi (12 bar) W.P.
with 125# ANSI flange drilling

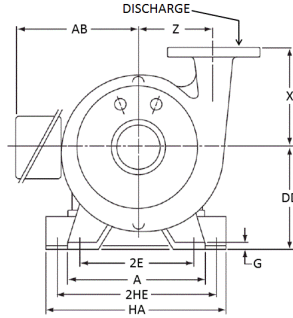
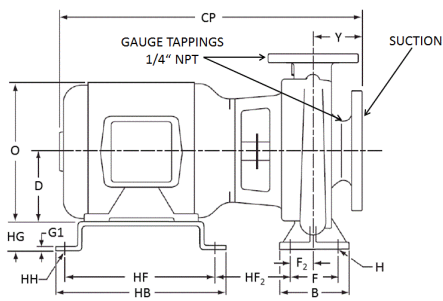
TYPE OF SEAL

- Standard Seal (Buna-Carbon/Ceramic)
- F Standard Seal w/ Flush Line (Buna-Carbon/Ceramic)
- S Stuffing Box Construction w/ Flushed Mechanical Single Seal (EPR-Tungsten Carbide/Carbon)
- PF Stuffing Box Construction w/ Flushed Packing (Graphite Impregnated Teflon)



Series e-1532 8GB Centrifugal Pump Submittal

B-881.50D



PUMP DIMENSIONS - INCHES (MM)		
X	Y	Z
13.00 (330)	7.01 (178)	11.25 (286)

FLANGE DIMENSIONS - INCHES (MM)						
125# ANSI FLAT FACE	NOMINAL PIPE SIZE	O.D	THICKNESS	BOLT CIRCLE DIAMETER	NO. OF BOLTS	SIZE OF BOLTS
DISCHARGE	8	15.00 (381)	1.69 (43)	11.75 (298)	8	0.75 (19)
SUCTION	10	17.50 (445)	1.95 (50)	14.25 (362)	12	0.88 (22)

DIMENSIONS - INCHES (mm)

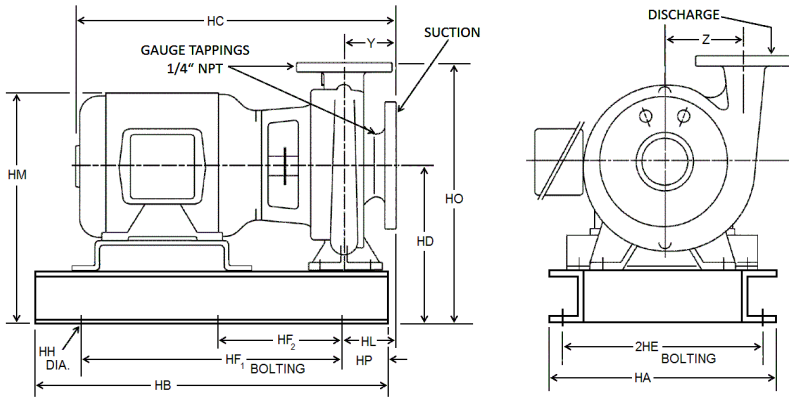
STANDARD SEAL

MOTOR FRAME	A	AB	HB	CP MAX	D	HF	G	G1	H	HH	HA	F2	2E	2HE	HF2 MAX	B	F	O	HG	DD
284JM	21.44 (545)	11.50 (292)	20.25 (514)	31.51 (800)	7.00 (178)	18.25 (464)	0.63 (16)	0.25 (6)	0.75 (19)	0.63 (16)	28.00 (711)	3.06 (78)	17.62 (448)	26.00 (660)	2.32 (59)	7.88 (200)	6.12 (155)	13.88 (353)	7.38 (187)	14.38 (365)
286JM	21.44 (545)	11.50 (292)	20.25 (514)	33.01 (838)	7.00 (178)	18.25 (464)	0.63 (16)	0.25 (6)	0.75 (19)	0.63 (16)	28.00 (711)	3.06 (78)	17.62 (448)	26.00 (660)	3.81 (97)	7.88 (200)	6.12 (155)	13.88 (353)	7.38 (187)	14.38 (365)
324JM	21.44 (545)	14.62 (371)	19.00 (483)	33.44 (849)	8.00 (203)	17.50 (445)	0.63 (16)	0.25 (6)	0.75 (19)	0.63 (16)	28.00 (711)	3.06 (78)	17.62 (448)	26.00 (660)	3.69 (34)	7.88 (200)	6.12 (155)	15.94 (405)	6.38 (162)	14.38 (365)
326JM	21.44 (545)	14.62 (371)	19.00 (483)	34.94 (887)	8.00 (203)	17.50 (445)	0.63 (16)	0.25 (6)	0.75 (19)	0.63 (16)	28.00 (711)	3.06 (78)	17.62 (448)	26.00 (660)	5.19 (132)	7.88 (200)	6.12 (155)	15.94 (405)	6.38 (162)	14.38 (365)

Dimensions are subject to change. Not to be used for construction purposes unless certified.

Series e-1532 8GB Centrifugal Pump Submittal

B-881.50D



PUMP DIMENSIONS - INCHES (MM)	
Y	Z
7.01 (178)	11.25 (286)

FLANGE DIMENSIONS - INCHES (MM)						
125# ANSI FLAT FACE	NOMINAL PIPE SIZE	O.D.	THICKNESS	BOLT CIRCLE DIAMETER	NO. OF BOLTS	SIZE OF BOLTS
DISCHARGE	8	15.00 (381)	1.69 (43)	11.75 (298)	8	0.75 (19)
SUCTION	10	17.50 (445)	1.95 (50)	14.25 (362)	12	0.88 (22)

DIMENSIONS - INCHES (mm)

STANDARD SEAL

MOTOR FRAME	HA	HB	HC MAX	HD	2HE	HF1	HF2	HH	HL	HM MAX	HO	HP
284JM	28.00 (711)	70.00 (1778)	31.51 (800)	18.38 (467)	26.00 (660)	67.50 (1715)	33.75 (858)	1.13 (29)	0.44 (11)	26.13 (664)	33.07 (840)	1.25 (32)
286JM	28.00 (711)	70.00 (1778)	33.01 (838)	18.38 (467)	26.00 (660)	67.50 (1715)	33.75 (858)	1.13 (29)	0.44 (11)	26.13 (664)	33.07 (840)	1.25 (32)
324JM	28.00 (711)	70.00 (1778)	33.44 (849)	18.38 (467)	26.00 (660)	67.50 (1715)	33.75 (858)	1.13 (29)	0.44 (11)	27.00 (686)	33.07 (840)	1.25 (32)
326JM	28.00 (711)	70.00 (1778)	34.94 (887)	18.38 (467)	26.00 (660)	67.50 (1715)	33.75 (858)	1.13 (29)	0.44 (11)	27.00 (686)	33.07 (840)	1.25 (32)

Dimensions are subject to change. Not to be used for construction purposes unless certified.