

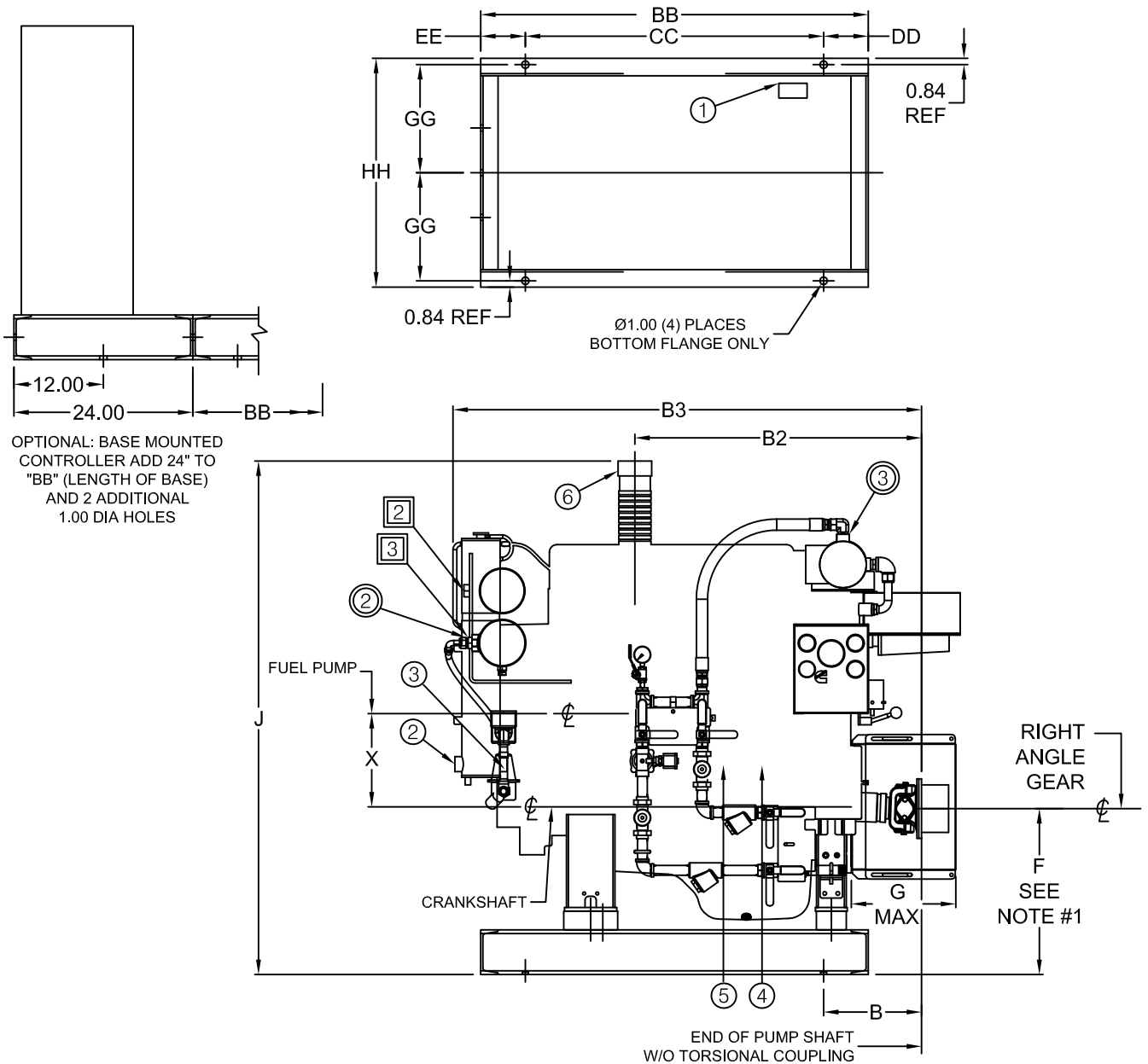
**A-C FIRE PUMP SYSTEMS**  
 DIMENSIONS – CUMMINS FIRE POWER  
 ENGINE MODEL – ALL  
 VERTICAL TURBINE FIRE PUMPS

**FP 2.4**  
 C037117

AUG 11

ALL DIMENSIONS IN INCHES

SUPERSEDES ALL PREVIOUS ISSUES



Item No.	Description	CFP33/39/59	CFP5E/7E	CFP83	CFP9E	CFP11E	CFP15E
⑥	Exhaust Outlet Conn.	3" NPTM	3" NPTM	4" NPTM	4" NPTM	5" NPTM	6" FLANGE
⑤	Fuel Supply Conn.	1/4" NPTF	1/2" NPTF	3/8" NPTF	1/2" NPTF	1/2" NPTF	3/4" NPTF
④	Fuel Return Conn	1/4" NPTF	3/8" NPTF	1/4" NPTF	3/8" NPTF	3/8" NPTF	3/4" NPTF
③	Raw Water Inlet	—	3/4" NPTF	—	—	—	—
②	Raw Water Outlet	—	1" NPTF	—	—	—	—
③	Raw Water Inlet	—	—	1" NPTF (83F40)	1" NPTF	1" NPTF	—
③	Raw Water Inlet	3/4" NPTF	—	1" NPTF	—	—	1-1/4" NPTF
②	Raw Water Outlet	—	—	—	—	—	1-1/2" NPTF
②	Raw Water Outlet	1" NPTF	—	1-1/4" NPTF	1-1/4" NPTF	1-1/4" NPTF	—
①	Heater Connection	1500 watt	1500 watt	2250 watt	2250 watt	2250 watt	3000 watt

**A-C FIRE PUMP SYSTEMS**  
 DIMENSIONS – CUMMINS FIRE POWER  
 ENGINE MODEL – ALL  
 VERTICAL TURBINE FIRE PUMPS

**FP 2.4**  
 C037117

AUG 11

ALL DIMENSIONS IN INCHES

SUPERSEDES ALL PREVIOUS ISSUES

ENGINE	"B"	"B3"	"B2"	"F"	"G"	"J"	"X"	"BB"	"CC"	"DD"	"EE"	"HH"	"GG"	SERIES	SHAFT LENGTH
CFP33-F10,20,30	12.06	43.36	30.48	21.42	16.5	62.06	6.42	42.5	30.5	6	6	28.50	13.38	1410 1480	9.88 9.00
CFP33-F25,35	12.06	43.36	30.60	21.42	16.5	63.93	6.42	42.5	30.5	6	6	28.50	13.38	1410	9.88
CFP5E	11.38	52.75	35.22	22.31	16.5	65.15	2.28	42.5	30.5	6	6	28.50	13.38	1610	9.50
CFP59	11.40	54.28	37.63	22.31	16.5	66.04	10.70	60	48	6	6	30.75	14.50	1610	9.50
CFP7E	13.12	63.96	41.69	22.25	18.5	65.85	2.29	60	48	6	6	30.75	14.50	1610 1710	9.50 11.00
CFP83-F10 TO F30	13.09	62.58	38.53	22.25	18.5	68.75	12.51	60	48	6	6	30.75	14.50	1710	11.00
CFP83-F40	13.09	62.58	38.53	22.25	18.5	68.75	12.51	60	48	6	6	30.75	14.50	1710	11.00
CFP9E	27.18	70.65	47.03	22.12	30.0	68.75	12.51	60	48	6	6	30.75	14.50	1710 1810 U3172	11.00 14.00 18.88
CFP11E	22.04	78.93	56.03	22.07	28.5	60.82	3.84	66	54	6	6	30.75	14.50	1810 U3172	14.00 18.88
CFP15E F10 TO F40	26.38	90.97	57.69	35.12	28.5	75.79	14.15	84	42	18	24	35.95	16.78	U3172	18.88
CFP15E F50 TO F70	26.27	90.97	60.00	35.12	28.5	80.03	14.15	84	42	18	24	35.95	16.78	U3172	18.88

**NOTES**

- All dimensions are inches  $\pm .125$ " tolerance unless otherwise specified.  
 Caution  
 The UL listed drive shaft is not designed to operate at 0° angle.  
 The UL listing covers 2°  $\pm$ 1°.  
 Refer to the engine manual for alignment
- Suction and discharge connections per ANSI B16.1. Holes in flanges straddle center line .
- Base plate setting (before piping), grouting procedures, and final alignment must be in accordance with A-C Fire Pump Systems recommended procedures outlined in the Instruction Manual associated with this pump type.
- All pipes must be supported independently near the pump to reduce strain on the pump casing. Also expansion joints, if used must not exert force on the casing.
- Coupling guard to meet ANSI/OSHA requirements.
- Heater voltage requirements: 120 VAC, 240 VAC optional.  
 Do not energize until engine coolant has been installed.
- Dimensions applicable with UL Listed Driveshaft where available.

<b>NOT FOR CONSTRUCTION, INSTALLATION OR APPLICATION PURPOSES UNLESS CERTIFIED.</b>							
<b>CERTIFIED FOR:</b>							
<b>CUSTOMER ORDER NO:</b>				<b>IDENTIFICATION NO:</b>			
<b>ENGINE DATA</b>	<b>MAKE</b>	<b>MODEL</b>	<b>HP</b>	<b>RPM</b>	<b>VOLTAGE</b>	<b>POLARITY</b>	<b>MAX ALTITUDE</b>
	<b>CUMMINS</b>					<b>NEG.</b>	
<b>SHOP ORDER:</b>			<b>CERTIFIED BY:</b>			<b>TOTAL WEIGHT</b>	<b>DATE:</b>