

Aquavar AB2

Quick Start Up Guide

LABELS FOUND ON THE CONTROLLER ACCESS COVER:

Fault Codes

Motor Overload Setting					
⚠WARNING: Disconnect Power And Wait For LED Indicator To Turn Off Before Touching Motor Overload Setting Switches.					
1 = UP			0 = DOWN		
DIP Switch Setting		Motor Overload Setting (Amps)			
1	2	3	4	1AB2	2AB2
1	1	1	1	2.5	4.6
1	1	1	0	2.8	5.2
1	1	0	1	3.3	5.3
1	0	1	1	3.5	5.8
0	1	1	1	3.8	6.5
0	0	0	0	4.2	6.9

Motor Overload Setting Label

Use this label to choose the correct Motor Overload Switch Setting. This label is found under the controller access cover.

Status Code Label

Use this label to diagnose any system errors. This label is found on the side of the controller access cover.

Status Codes*	
Green Light Codes	
Constant	Standby/Low Voltage
Blinking	Pump Running
Red Light Codes	
Constant	Replace Controller
1 Blink	No Water/Loss Of Prime
2 Blinks	Tank Water-Logged
3 Blinks	Pressure Sensor Fault
4 Blinks	Pump or Motor Bound
5 Blinks	Short Circuit
6 Blinks	Ground Fault
7 Blinks	High Temperature
8 Blinks	Over Voltage (>264V)
9 Blinks	Motor Overload
*No Light - No/Very Low Voltage	

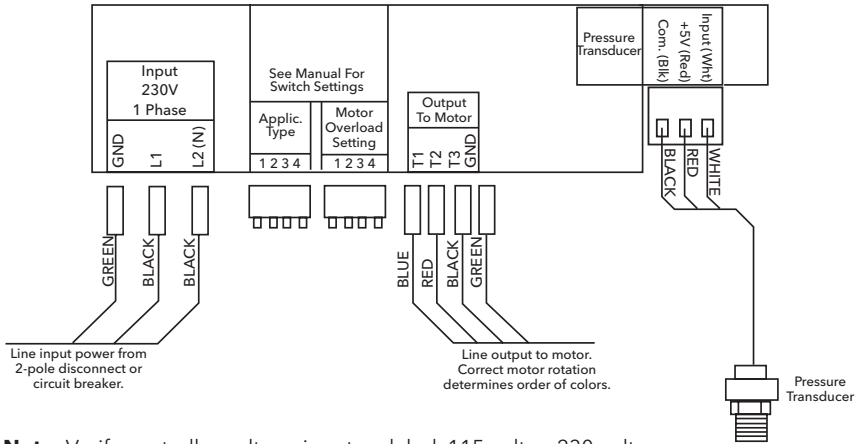
Application Switch Setting					
⚠WARNING: Disconnect Power And Wait For LED Indicator To Turn Off Before Touching Application Setting Switches.					
DIP Switch Setting		1 = UP		0 = DOWN	
1	2	3	4	Minimum Speed (Hz)	Ramp Setting
1	1	1	1	10	Slow
1	1	1	0	10	Medium
1	1	0	1	10	Fast
1	0	1	1	30	Slow
0	1	1	1	30	Medium
0	0	0	0	30	Fast
*THESE SETTINGS ARE NOT TO BE USED WITH SUBMERSIBLE PUMPS.					

Application Switch Setting Label

Use this label to choose the correct Application Switch Setting. This label is found under the controller access cover.

Aquavar AB2 Wiring Diagram

1 AND 2 HP



Note: Verify controller voltage input on label. 115 volt or 230 volt.