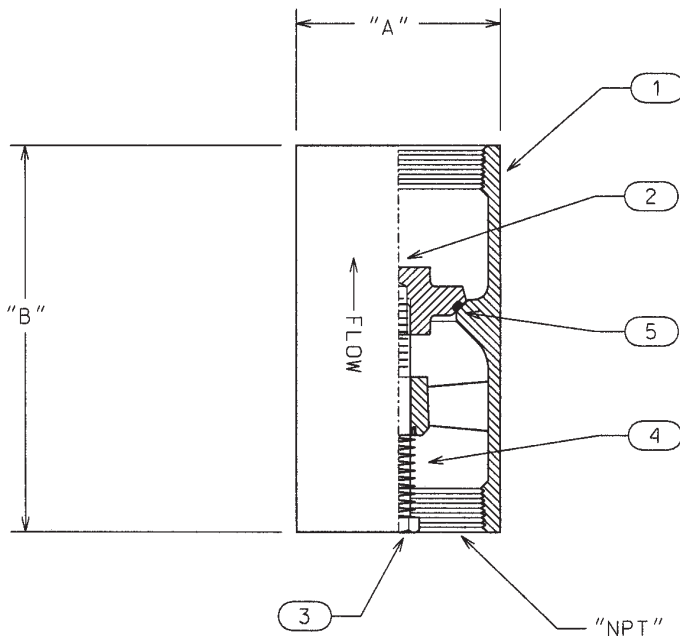




# Section View Check Valve

## 200.D.05



### MATERIALS OF CONSTRUCTION

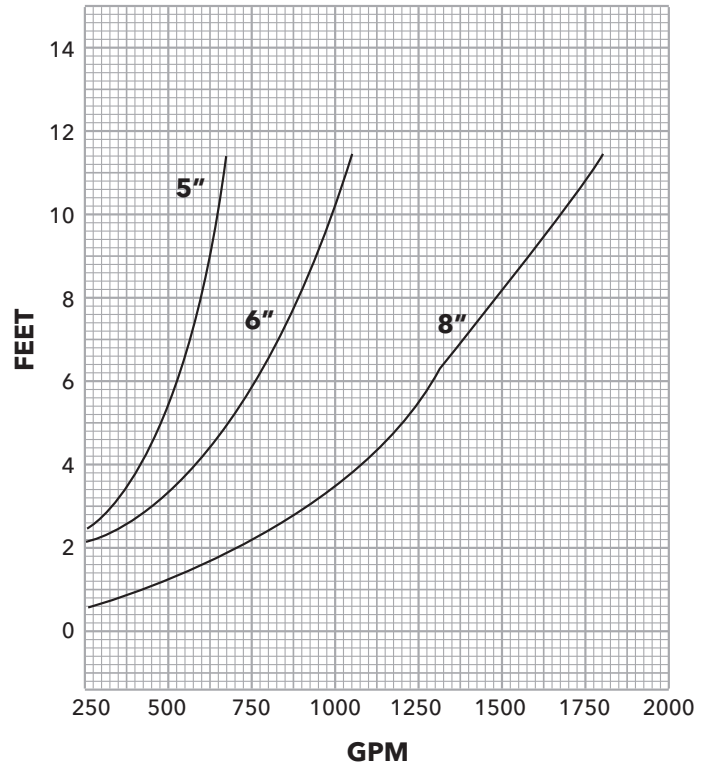
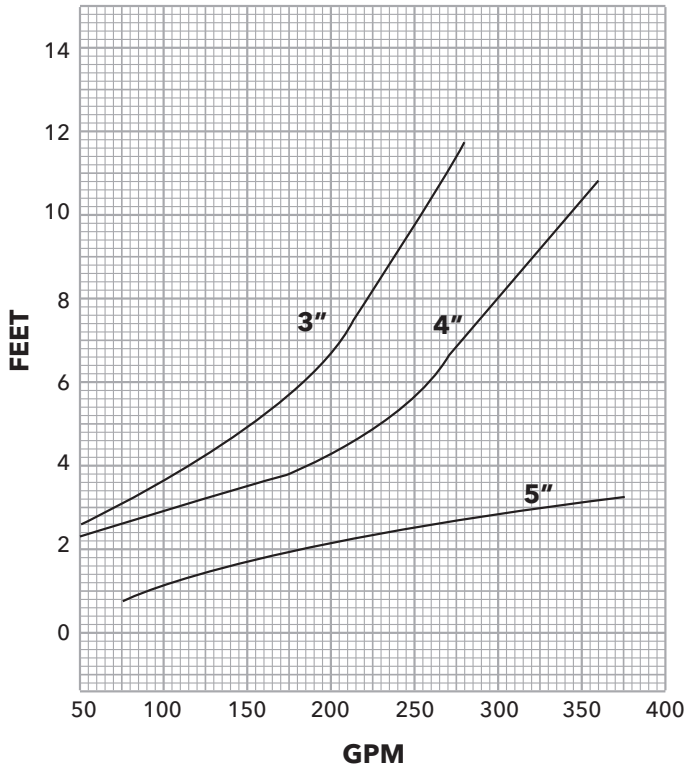
Item	Name	Material	GPI	ASTM
1	Body	Ductile	1018	A536
2	Plunger	Iron	1003	A48
3	Capscrew	SST	2228	A276
4	Spring	SST	2228	A276
5	O-Ring	Nitrile	5301	

### DIMENSIONS

NPT	"A"	"B"	Weight
3	4.31	9.00	11
4	5.25	10.00	20
5	6.63	11.00	32
6	7.63	11.00	44
8	9.88	13.00	71

# Check Valve Head Loss

## 200.D.06



Valve should be located one joint of pipe above pump if possible. Pressure Rating - 400 PSI

**Xylem Inc.**  
[www.bellgossett.com](http://www.bellgossett.com)

Bell & Gossett is a trademark of Xylem Inc. or one of its subsidiaries.  
 © 2017 Xylem Inc. BGD200D05 R1 July 2017



**Bell & Gossett**  
 a xylem brand