

SENSOR/TRANSMITTERS (ST-SERIES)

PRESSURE AND DIFFERENTIAL PRESSURE SENSOR/TRANSMITTERS

POWERSAV®

VARIABLE SPEED PUMPING SYSTEMS



Gauge Pressure
Transmitter ST-101



Differential Pressure
Transmitter ST-102

The rugged Bell & Gossett Pressure (ST-101) and Differential Pressure (ST-102) Sensor/Transmitters precisely measure system conditions and transmit a proportional 4 to 20mA dc signal to the Technologic Controller.

These capacitance type units are factory calibrated to a standard range, but can be re-calibrated at the factory to meet a variety of conditions.

INSTALLATION CONSIDERATIONS

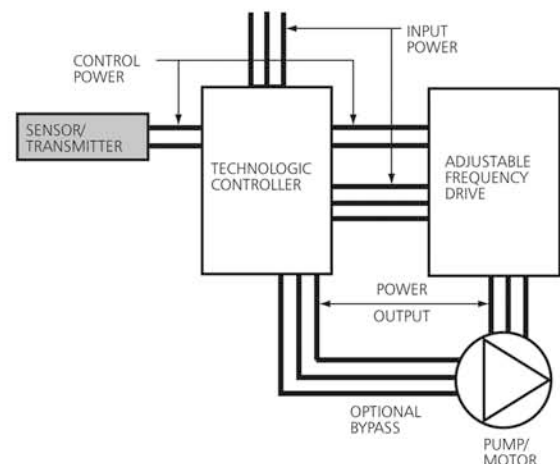
- Standard 18 gauge 2 wire shielded cable located in a conduit separate from high voltage wiring
- 24 vdc power supplied from Technologic Controller

STANDARD FEATURES

- Completely self contained two wire unit
- Takes accurate pressure readings and relays them to the Technologic controller up to 2000 feet away
- No separate power source required for distances less than 2000 feet
- All wetted parts are 316 stainless steel
- Built-in RFI filter effective from 20 to 1000 MHz
- Housed in NEMA 4X enclosure
- Unit accuracy is 0.07% full span
- Withstands static pressures up to 2300 PSI (ST-102)
- Mounting hardware
- 3 Valve bypass manifold (optional)
- Standard Calibration:
ST-101: 0-150 psig
ST-102: 0-36 psid
0-70 psid
0-100 psid
- Approximate weight:
ST-101: 4 lbs.
ST-102: 10 lbs.

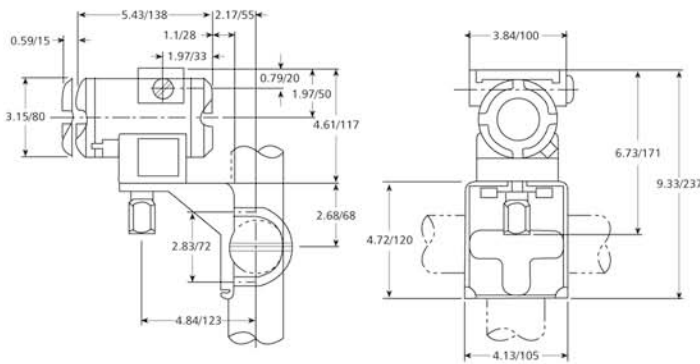
POWERSAV®

BLOCK DIAGRAM

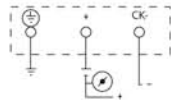


OUTLINE DIMENSION DRAWINGS

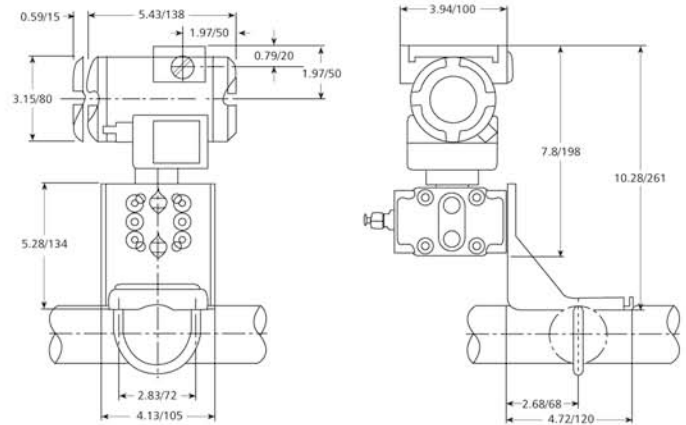
DIMENSIONS IN INCHES/MILLIMETERS



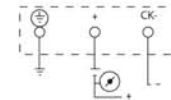
CONNECTION DIAGRAM



GAUGE PRESSURE TRANSMITTER ST-101



CONNECTION DIAGRAM



DIFFERENTIAL PRESSURE TRANSMITTER ST-102

Sensor/Transmitter Specification

Pressure Transmitter # ST-101

Furnish () field mounted gauge pressure transmitter(s) as indicated on plans for measuring gauge pressure and transmitting an isolated linear 4-20 mA dc output for use in a standard two-wire 24V dc system. The unit shall be accurate to $\pm 0.07\%$ of full span, have an adjustable span limit between _____ and _____ psi and shall withstand over ranges up to a static pressure of _____ psi with negligible change in output. It shall have stainless steel wetted parts with 1/2" NPT process connection. Unit shall be protected against radio frequency interference and shall have a water tight (NEMA Type 4x) electrical enclosure with 1/2" NPT conduit connection.

Differential Pressure Transmitter # ST-102

Furnish () field mounted differential pressure transmitter(s) as indicated on plans for measuring differential pressure and transmitting an isolated linear 4-20 mA dc output for use in a standard two-wire 24V dc system. The unit shall be accurate to $\pm 0.07\%$ of full span, have an adjustable span limit between _____ and _____ psi and shall withstand over ranges up to a static pressure of 2300 psi with negligible change in output. It shall have stainless steel wetted parts with 1/4" NPT process connection. A 3 valve bypass manifold shall be available as an option. Unit shall be protected against radio frequency interference and shall have a water tight (NEMA Type 4x) electrical enclosure with 1/2" NPT conduit connection.

Xylem Inc.

8200 N. Austin Avenue, Morton Grove, Illinois 60053
 Phone: (847) 966-3700 Fax: (847) 965-8379
www.xylem.com/brands/bellgossett

