

COMPACT MODULAR

4 to 6 weeks standard configuration lead time

Flow Rates from 400-2775 GPM*

(91-630 M3/HR)

Pressures from 100-140 PSI*

(6.89-9.65 BAR)

**Contact Flowtronex for other flows and pressures.
Not for potable water use.*

**Backed by our FlowNet™ Global
Service Network**

**Pace™ Integrated Pump Controller
Real Time Communication w/ Toro®
Irrigation Central Control**



Silent Storm Express II & III

VERTICAL TURBINE VARIABLE FREQUENCY DRIVE PUMPING SYSTEM

The Flowtronex Silent Storm Express (SSE), pre-configured for faster delivery.

Designed for easy set and start, Silent Storm Express integrates precision computer control with Variable Frequency Drive (VFD) efficiency, giving golf course superintendents the ultimate in fully-programmable pump stations.

Designed to meet specific requirements, Silent Storm VFD systems are completely UL Listed for both US and Canada. Available in vertical configurations, Silent Storm Express irrigation pump systems work in harmony with our line of integrated water management solutions to bring the source water to the course.

Features and Benefits

- Pre-configured design - faster delivery
- 2-Main (SSE-II) or 3-Main (SSE-III) pump station
- PMP
- PACE PLC controller
- 5.7" or 12" HMI Color touchscreens
- High efficiency Goulds vertical turbine pumps:
 - Stainless steel shafting
 - Water lubricated line shaft bearings
 - Stainless steel basket strainer
- Premium Efficient Motors
 - Hollow shaft motor
 - Motor Winding Space Heaters
- Energy efficient VFD controller
 - Integral Input Line Reactor
- 1" steel pump mounting plate
- 100% continuous weld around deck plate
- Integral wet well access hatch
- UL 508A Certified Panels (E75447)
- UL-CQCZJ Certified Packages (E161665)
- UL Listed NEMA 4 starter and control panel
- Stainless steel pressure transducers
- 3.5" silicone-filled pressure gauges with isolation valves
- Isolation valves
- Hose bibb connection
- Individual pump silent wafer check valves
- Individual pump grove-type isolation valves
- Lug-style station discharge isolation valve
- ISO 9001:2008 Certification



Standard Options Available

- Fertigation run relay
- Base toff coating
- Communication Connectivity: Radio, Direct-connect with or without internet, cellular, Internet drop, Ethernet with or without internet
- 1" TOL
- Florida style dogleg
- Lake level control
- Krohne mag flow meter for real-time power usage
- Power guard
- Power Zone
- Skid TOFF coating
- VAF with Bypass

	Flow Range GPM	Pressure Range PSI	Main Pump HP Range	PMP HP	Voltage
SSE-II	400-1850	100-140	25-75	1.5 or 2	460
SSE-III	400-2775	100-140	50, 60, 75	5	460

PACE PLC controller with choice of 5.7" or 12" color touchscreen interface

- PACE software with PowerGuard
- Full communication capabilities (see Chart A - Full Communications Spectrum)
 - Ethernet
 - Direct-connect Internet or Internet drop
 - Cellular
 - Radio
- Full graphing capabilities of flow, pressure, and equipment operation
- Real-time power usage metering
- Automatic alarm notifications via text or email
- Remote monitoring and troubleshooting



Other standard control features & protection

- VFD with integral input line reactor
- Through-door fusible main station disconnect
- Individual operator switches for pumps and ancillary equipment
- Stainless Steel Pressure Transducers
- Automatic pump alternation
- Low discharge pressure shutdown
- High discharge pressure shutdown with auto-restart.
- Low water level shutdown with auto-restart
- VFD fault shutdown with auto-restart
- Overload shutdown
- Individual motor phase failure, phase imbalance, and low voltage protection

PACE main operating screen

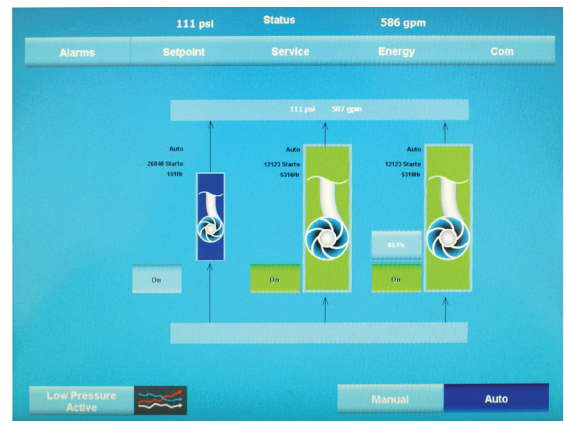


Chart A - Connection types and capabilities available to each type of Flowtronex systems.

Pump Station Communications	Access Station Info via Browser	Cell Phone App	Irrigation Interface	Factory/Flownet Diagnostics and Remote Troubleshooting	Review Historical Pressure/Flow, Events, Alarms and Usage Data	Email/Text Alerts	Access from Home/Remote
Radio w/internet available*	Y	Y	Y	Y	Y	Y	Y
Radio no internet available	Y	Y [†]	Y	N	Y	N	N
Direct Connect w/internet available*	Y	Y	Y	Y	Y	Y	Y
Direct Connect no internet available	Y [†]	Y [†]	Y	N	Y	N	N
Cellular	Y	Y	Y**	Y	Y	Y	Y
Internet Drop	Y	Y	Y	Y	Y	Y	Y
Ethernet w/internet available*	Y	Y	Y	Y	Y	Y	Y
Ethernet no internet available	Y [†]	Y [†]	Y	N	Y	N	N

*Internet connection provided by the user at the point of access in the maintenance facility. This usually requires help from the IT department, though it's simple, it can sometimes be tedious to get accomplished.

**Care must be taken to ensure an adequate data plan is purchased to prevent overage charges.

[†]From devices connected to the local network only.

[†]Smart phone or tablet device must be connected to local network, such as through a local wi-fi connection.

Xylem |'zīləm|

- 1) The tissue in plants that brings water upward from the roots;
- 2) a leading global water technology company.

We're a global team unified in a common purpose: creating innovative solutions to meet our world's water needs. Developing new technologies that will improve the way water is used, conserved, and re-used in the future is central to our work. We move, treat, analyze, and return water to the environment, and we help people use water efficiently, in their homes, buildings, factories and farms. In more than 150 countries, we have strong, long-standing relationships with customers who know us for our powerful combination of leading product brands and applications expertise, backed by a legacy of innovation.

For more information on how Xylem can help you, go to www.xyleminc.com



Xylem, Inc.
10661 Newkirk Street
Dallas, TX 75220
Phone: 800-786-7480
www.flowtronex.com