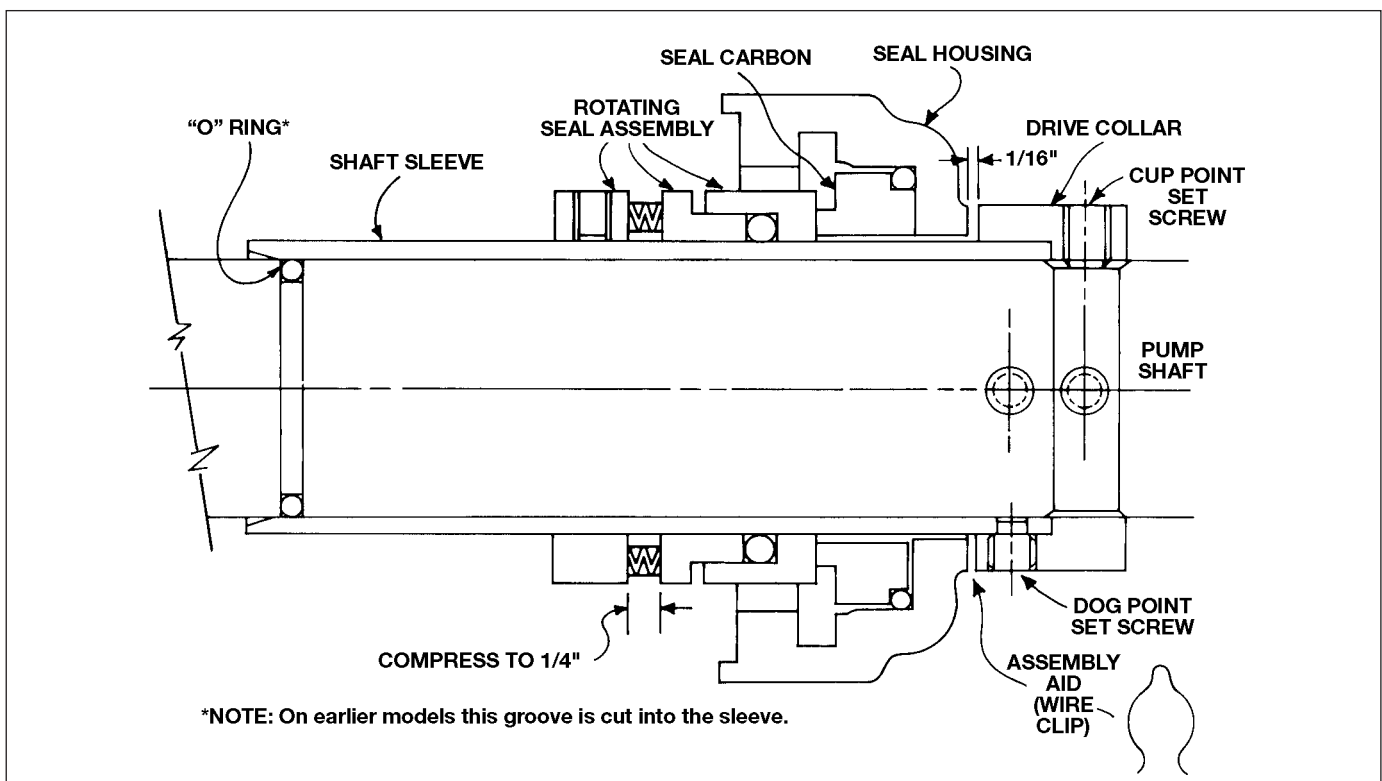




Assembly procedure for Single Flush Mechanical Seal VSC and VSCS Pumps



NOTE: Refer to pump instruction manual for complete assembly instructions.

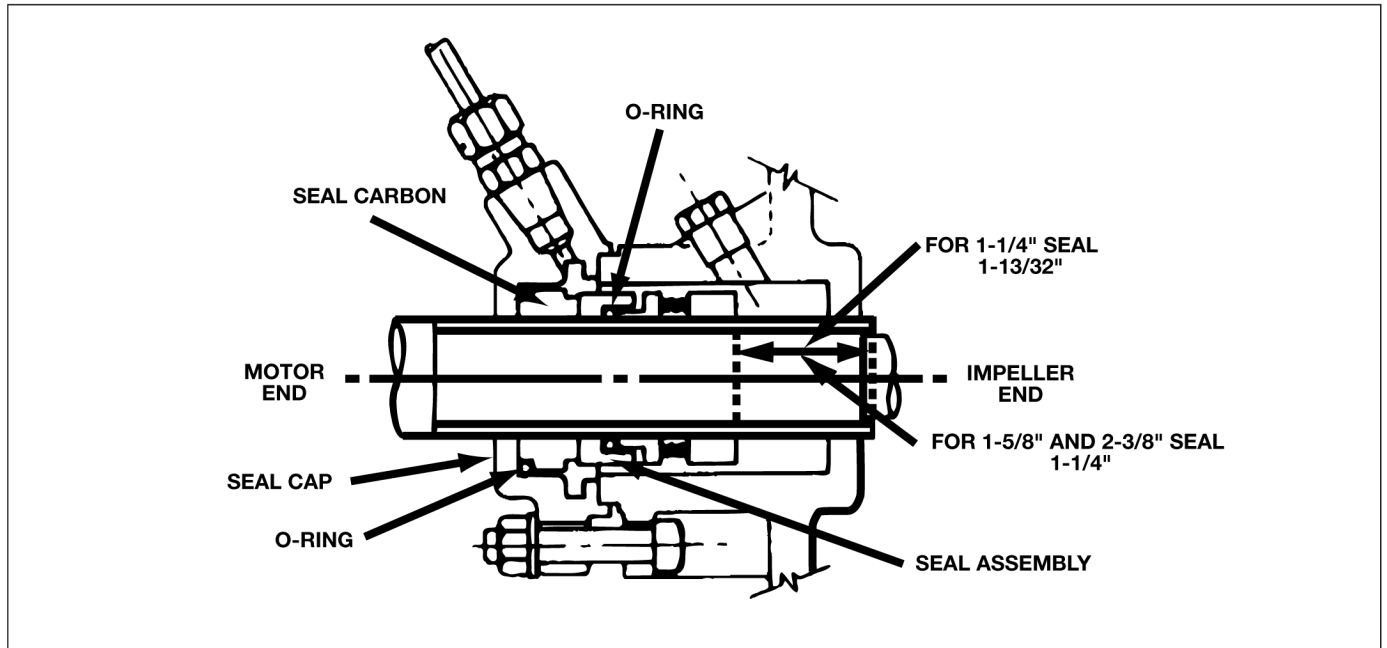
Clean shaft sleeve and pump shaft so that assembly can be completed without damaging the seal parts.

Remove O ring from its position in the shaft and replace with new O ring provided. Lubricate O ring on stationary seal seat (carbon) with silicone grease or soapy water. Apply silicone grease at O ring surface only. Do not apply any grease or lubricant at seal mating face. **Do not use petroleum lubricant!** Position in seal housing. Position shaft sleeve in drive collar and tighten two dog point set screws in holes provided. Set sleeve and collar assembly on end and place assembly aid spacer around shaft sleeve and position against drive collar. Place seal housing with stationary seat over end of sleeve against assembly aid spacer. Lubricate O ring in rotating seal

assembly with silicone grease or soapy water. **Do not use petroleum lubricant!** Slip it over end of shaft sleeve and position against stationary seal carbon ring. Compress rotating seal assembly to required working length by measuring 1/4" space between seal parts that house compression springs and tighten set screws. Seal is now adjusted for proper working length and is ready for installation in the pump.

Apply anti-seize compound to shaft, place seal housing gasket in position and slide complete assembly over pump shaft. Assemble bearing housing and ball bearing to pump shaft and properly locate and lock in position. Push sleeve and collar assembly to its final position against stuffing box bracket and bolt in place. Tighten drive collar set screws in undercut of shaft. Remove assembly aid spacer.

Assembly procedure for Single Flush Mechanical Seal Series 80, 1510 and 1531 Pumps



NOTE: Refer to pump instruction manual for complete assembly instructions.

Clean the pump shaft in the area where the shaft sleeve will locate with fine grade emery cloth.

Lubricate O ring on stationary seal seat (carbon) with silicone grease or soapy water. Apply silicone grease or lubricant at O ring surface only. Do not apply any grease or lubricant at seal mating face. Position seal seat housing. **Do not use**

petroleum lubricant! Slide seal assembly over shaft sleeve and lock collar in place. For 1¹/₄" seals, the collar should be 1¹³/₃₂" from the impeller end of the shaft sleeve. For 1⁵/₈" and 2³/₈" seals, the distance should be 1¹/₄". Assemble volute coverplate to bracket. Carefully place seal cap with carbon insert in position against rotating seal member. Evenly tighten seal cap bolts into place. Do not over-tighten. Connect flush tubing to seal cap. Complete re-assembly by reversing removal instructions.



Xylem Inc.
8200 N. Austin Avenue
Morton Grove, Illinois 60053
Phone: (847) 966-3700
Fax: (847) 965-8379
www.xyleminc.com/brands/bellgossett

Bell & Gossett is a trademark of Xylem Inc. or one of its subsidiaries.
© 2012 Xylem Inc. P85505B May 2012