

CLARKE

FIRE PUMP COUPLINGS FOR ELECTRIC MOTORS

Preliminary
Pending
Listing

MODELS
C1060T
C1070T
C1080T

C1040T
C1050T

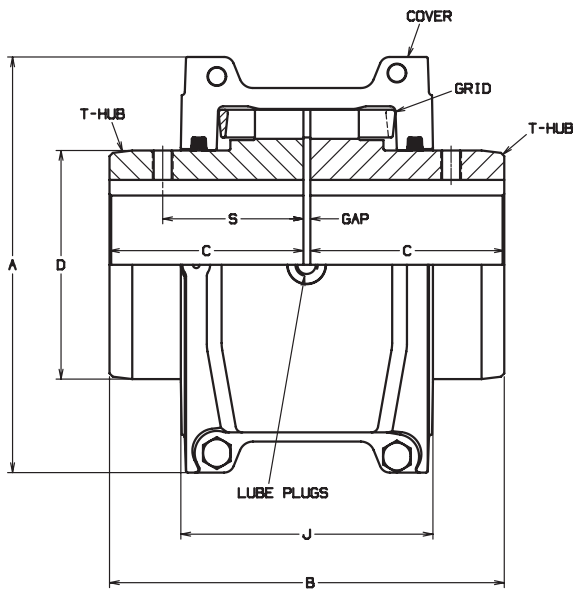
Motor Driven Certified All Metal Flexible Couplings UL Certification Pending Ratings BHP/kW at RPM						
MODEL	OPERATING SPEED					
	1450	1750	1800	3000	3600	
C1040T	50.6 37.7	61.1 45.6	62.8 46.8	105 78.3	126 94	
C1050T	89 66.4	107 79.8	110 82.1	188 136.5	220 164.1	
C1060T	139 103.7	168 125.3	173 129	288 214.8	346 258.1	
C1070T	202 15.7	244 102	251 187.2			
C1080T	418 311.8	504 376	518 386.4			

Couplings cannot be used with diesel engines.
Motor certified couplings can only be used with centrifugal fire pumps, contact factory for application guidelines for positive displacement pumps.

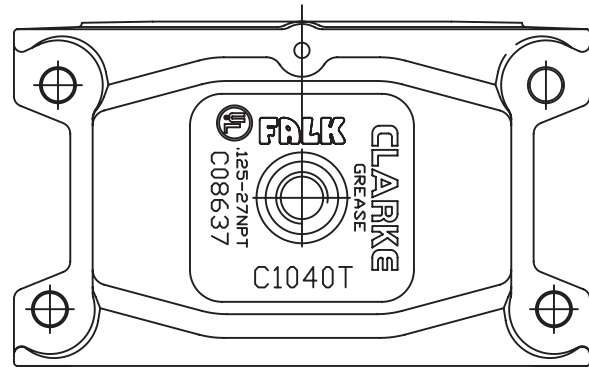


Type C10

Close Couple/Dimensions — Inches



Cover Profile — Horizontal Split



Covers are cast aluminum alloy

MODEL	Max Speed rpm	Max Bore*	Min Bore	Cplg Wt With No Bore-(lb)	Lube Wt (lb)	Dimensions — Inches						
						A	B	C	D	J	S	Max Gap
C1040T	3,600	1.625	.500	7.4	.12	4.50	4.12	2.00	2.25	2.75	1.58	.25
C1050T	3,600	1.875	.500	12.0	.15	5.32	4.88	2.38	2.62	3.19	1.76	.25
C1060T	3,600	2.125	.750	16.0	.19	5.82	5.12	2.50	3.00	3.68	2.06	.25
C1070T	1,800	2.500	.750	23.0	.25	6.25	6.12	3.00	3.44	3.81	2.12	.25
C1080T	1,800	3.000	1.062	39.0	.38	7.50	7.12	3.50	4.12	4.55	2.54	.25

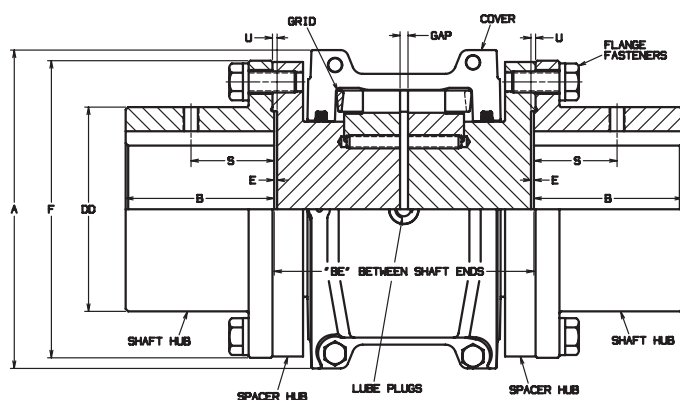
*Max bore with square key. For larger bores with rectangular key, consult factory.

*Standard couplings are designed for clearance fit with one set screw over keyway.



Type C31

Full Spacer



For dimensions, consult factory
FFSpacer or half spacer are required for end suction fire pumps

Table 1 — Type C31 Standard Stock Spacer
(BE=Distance Between Shaft End)

“BE” Between Shaft Ends	ANSI B73.1 Pump Std	Coupling Model				
		1040T	1050T	1060T	1070T	1080T
3.50	X	X				
4.38	X	X	X			
5.00	X	X	X	X	X	
7.25	X	X	X	X	X	X

Other “BE” available, consult factory

Type C35

Half Spacer

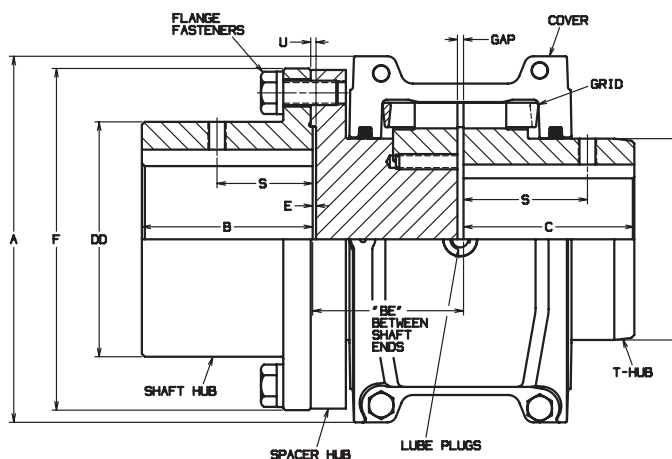


Table 2 — Type C35 Half Stock Spacer Length
(BE=Distance Between Shaft End)

“BE” Between Shaft Ends	ANSI B73.1 Pump Std	Coupling Model				
		1040T	1050T	1060T	1070T	1080T
3.50	X	X	X	X		
5.00	X					X

Caution: To permit removal of T35 shaft hub without moving connected equipment, select a half spacer with dimension BE (in table 2) greater than the dimension B.

CERTIFIED POWER AT ANY SPEED

Although UL Certified BHP ratings are shown at specific speeds, Clarke couplings can be applied at any intermediate speed. Contact Clarke or your Pump OEM representative to obtain details.

CLARKE

www.clarkefire.com

CLARKE Fire Protection Products, Inc.

11440 Rockfield Court
Cincinnati, Ohio 45241
United States of America

Tel +1-513-771-2200 Fax +1-513-771-5375

C132128 5/07

Fire Protection Products

CLARKE UK, Ltd.

Grange Works, Lomond Rd.
Coatbridge, ML5-2NN
United Kingdom

Tel +44-1236-429946 Fax +44-1236-427274

Printed in U.S.A.

Specifications and information contained in this brochure subject to change without notice.