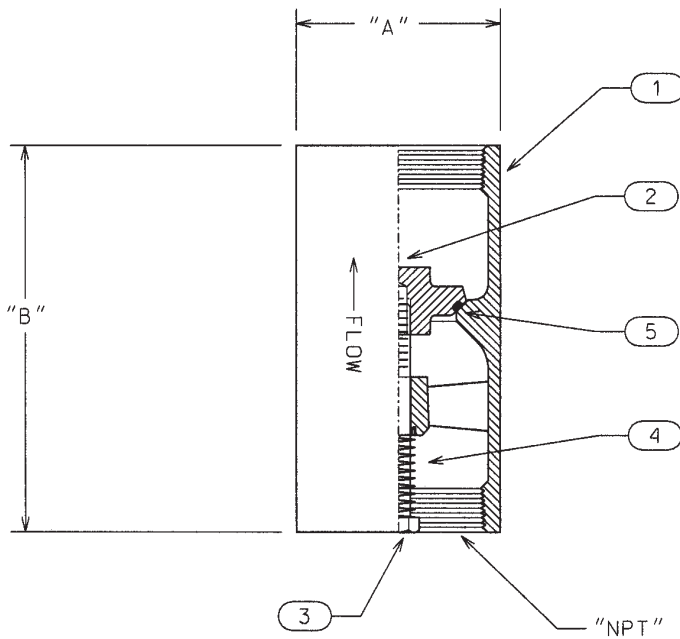


# Section View Check Valve

## 200.D.05



### MATERIALS OF CONSTRUCTION

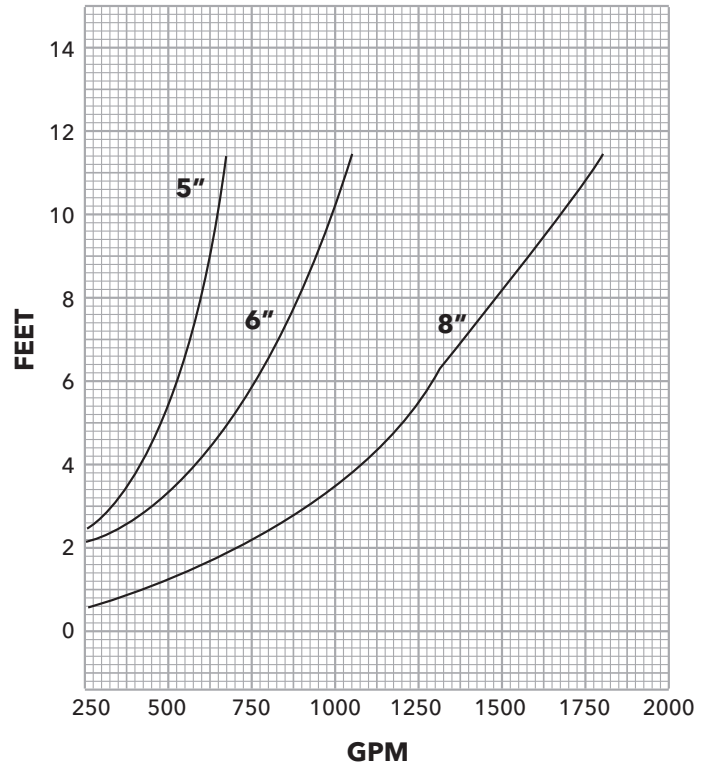
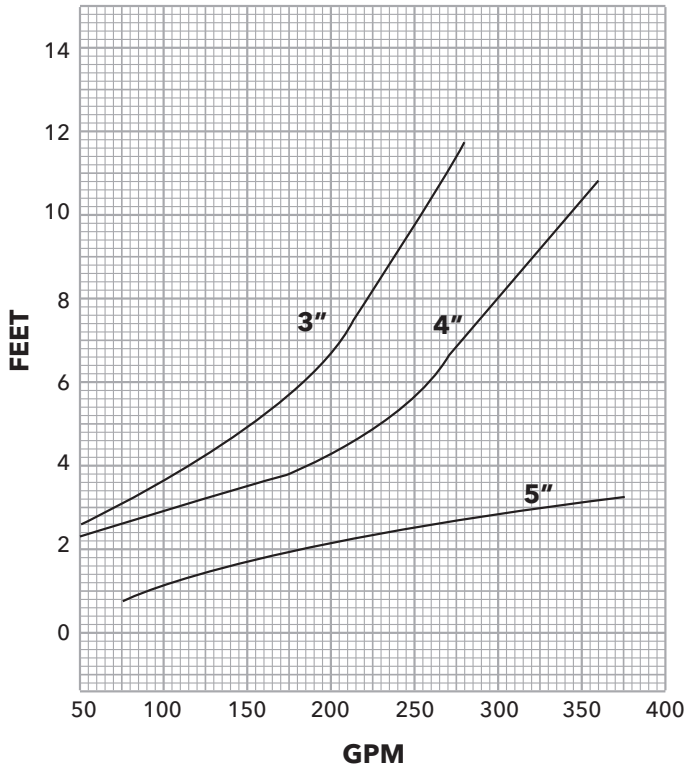
Item	Description	Code	Material Description	ASTM
1	Body	1018	Ductile Iron	A536
2	Plunger	1003	Cast Iron	A48 CL30
3	Capscrew	2228	304SS	A276
4	Spring	2228	304SS	A276
5	O-Ring	5302	Nitrile	D2000 2BG715B14

### DIMENSIONS

NPT	"A"	"B"	Weight
3	4.31	9.00	11
4	5.25	10.00	20
5	6.63	11.00	32
6	7.63	11.00	44
8	9.88	13.00	71

# Check Valve Head Loss

## 200.D.06



Valve should be located one joint of pipe above pump if possible. Pressure Rating - 400 PSI.